



Enriching Lives

**ILLUSTRATED SPARE PART LIST
FOR**

**2R1040 ENGINE
S/F POWER GENERATION
A/C – INTERNACO (EXPORT)**

**APPLICATION CODE NO.
2H.2034**

KIRLOSKAR OIL ENGINES LIMITED

Regd. Office: Laxmanrao Kirloskar Road, Khadki, Pune - 411 003, INDIA.
Tel.: +91 (20) 2581 0341, 2581 5341. Fax: +91 (20) 2581 3208, 2581 0209.
email: global@koel.co.in Website: www.kirloskar.com

AUGUST – 2006

PUBLICATION NO. 2H.101.28.0.00

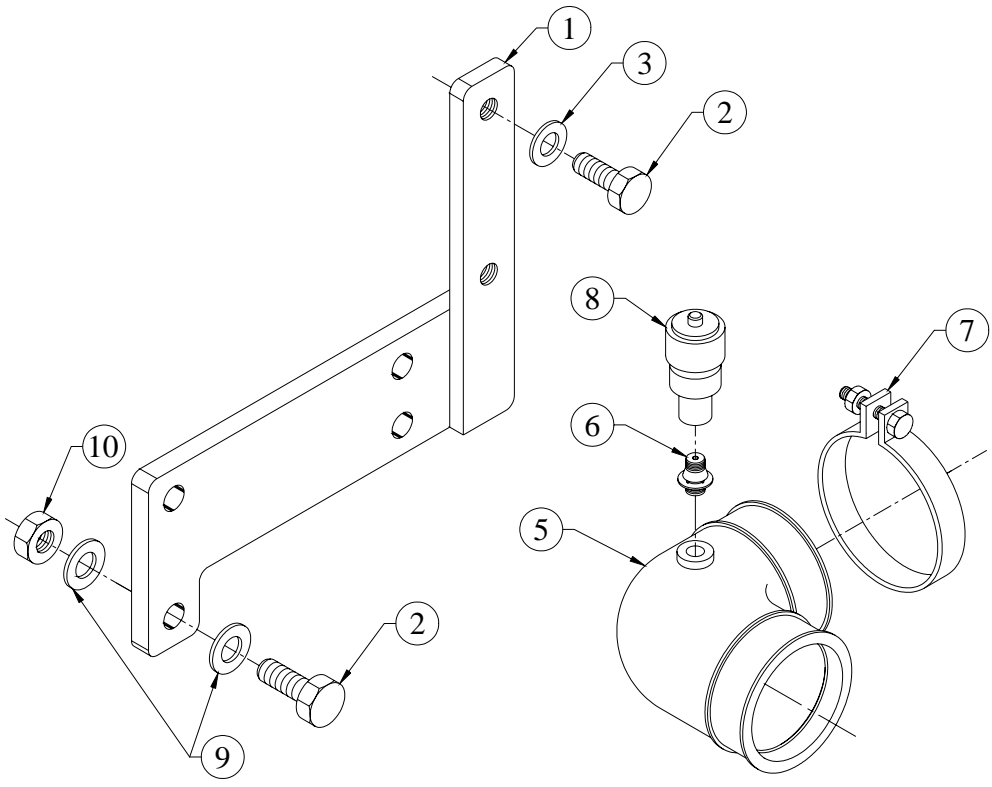
**GROUP INDEX
APPLICATION CODE 2H.2034**

SR.NO.	GROUP NO.	DESCRIPTION	QTY.	PAGE NO.
1	03.910	ADAPTER RING FOR SAE1 TO SAE2	1	4
2	2H.127.1	AIR CLEANER (04.587) MOUNTING ARRANGMENT FOR 2R1040 ENGINE (INTERNACO) WITH ALLUMINIUM MANIFOLD	1	5
3	2H.279	AIR CLEANER (04.587) MOUNTING ARRANGMENT FOR 2R1040 ENGINE (VISA ENERGY) WITH ALLUMINIUM MANIFOLD	1	6
4	2H.203...EXP	AIR INLET MANIFOLD FOR PCV	1	7
5	04.367.1	ALTERNATOR (STAGE 1) MICO, 12V55A	1	8
6	4H.198	ALTERNATOR MOUNTING AND BELT GUARD (TURBO) WITH 68PCD PULLEY SINGLE GROOVE	1	9, 10
7	2H.003	CAMSHAFT	1	11
8	4H.266...EXP	COVER FOR FUEL PUMP GEAR (PG)	1	12
9	2H.034	CRANK PULLEY (SPA, SINGLE GR) PG	1	13
10	2H.002	CRANK SHAFT	1	14
11	P3.007	CYLINDER HEAD	1	15, TO 17
12	2H.008	CYLINDER LINER. (105 DIA)	2	18
13	2H.013...EXP	DELIVERY BODY	1	19
14	03.036	DIP-STICK	1	20
15	4H.228	ENGINE MNTG.FOOT (225 HT.)	1	21
16	2H.124	ENGINE MOUNTING FOOT (FOR PACKING PURPOSE)	1	22
17	2H.115	EXHAUST ADAPTOR FOR 2R1040 UPWARD OPENING	1	23
18	P1.036	EXHAUST MANIFOLD	1	24
19	02.322	EXHAUST SILENSER	1	25
20	46.357	EXPANSION BELLOW (2.5") AND MOUNTING	1	26
21	6H.065	FLYWHEEL HOUSING SAE 1	1	27
22	2H.205	FLYWHEEL (HEAVY) 16Kg-m2 AND MOUNTING	1	28
23	4H.179...EXP	FRONT COVER FOR PG APPLICATION	1	29
24	2H.103.1	FUEL FILTER AND MTG S/F 2R1040 ON SAE1 FLYWHEEL HOUSING	1	30
25	P1.011	FUEL INJECTION PIPE	1	31
26	3H.032.2	FUEL INJECTION PUMP (PG STAGE II)	1	32
27	2H.048...EXP	FUEL PUMP FOR 4% GOVERNING	1	33
28	2H.011	FUEL PUMP GEAR.	1	34
29	4H.1074...EXP	GEAR CASING WITH DEFLECTOR	1	35
30	4H.237	INTERMEDIATE GEAR AND SUPPORT (FOR ENGINE W/O AUTO TIMER)	1	36
31	4H.018	LIFTING HOOK (S.F.COMP. -TR)	1	37
32	2H.072...EXP	LUB OIL SUMP	1	38
SR.NO.	GROUP NO.	DESCRIPTION	QTY.	PAGE NO.
33	2H.092.1	LUBE OIL PR GAUGE SENDOR	1	39

34	3H.005	LUBE.OIL PUMP.	1	40, 41
35	2H.301	MICO STARTER 12VDC 2.7KW SUITABLE FOR 30*C	1	42
36	2H.001...EXP	MONOBLOCK CRANKCASE	1	43 TO 46
37	4H.081.1	MTG.FOR RADIATOR (STAGE 1)	1	47
38	2H.023	NOZZLE & NOZZLE MTG.	2	48 TO 53
39	2H.061	NOZZLE LEAK OFF PIPE (M12 U)	1	54
40	4H.027...EXP	OIL FILLING BODY	1	55, 56
41	2H.039...EXP	OIL SEAL HOUSING (PG)	1	57
42	2H.009	PISTON & CON ROD ASSEMBLY	2	58, 59
43	2H.007	PUSHROD & TAPPETS	2	60
44	4H.083.2	RADIATOR FAN (430 DIA, PUSHER)	1	61
45	4H.083.1	RADIATOR FAN MTG.(STAGE 1,PG)	1	62
46	3H.216	RADIATOR FOR 3R1040 OPEN GENSET (EXPORT & P.U. PAINTED)	1	63
47	02.359	RAIN CAP & MTG	1	64
48	04.589	RAIN CAP AND MOUNTING S/F DRY TYPE PLASTIC AIR CLEANER (4.5 AND 6 CUBICM)	1	65
49	2H.204	ROCKER COVER (FOR PCV)	1	66
50	2H.109	SPIN ON FILTER & COOLER (4RT HEADER + 3R COOLER) S/F WATER JACKET HEATER	1	67, 68
51	3H.135.1	STOP SOLENOID ASSEMBLY 12V D.C. FOR MICO PUMP ENERGIES TO RUN WITHOUT TIMER	1	69
52	2H.071	SUCTION TUBE	1	70
53	3H.061...EXP	THERMOSTAT AND MOUNTING (NON ASBESTOS GASKET - USA)	1	71
54	4H.069	V BELT (XPA 1250)	1	72
55	2H.022	VALVE ROCKER ASSEMBLY	1	73, 74
56	3H.029.1	WATER INLET AND OUTLET CONNECTION FOR RADIATOR (STAGE 1)	1	75
57	3H.029.2	WATER INLET AND OUTLET CONNECTION FOR RADIATOR (STAGE 2)	1	76
58	4H.052...EXP	WATER PUMP	1	77, 78
59	4H.005	WATER PUMP PULLEY (120 PCD, 1,SPA)	1	79
60	46.260	WATER TEMP.SW. (95 DEG.+ - 3 DEG)	1	80
61	2H.074.04	SET OF JOINTS	1	81
62	2H.074.33	SET OF WASHERS	1	82
63	2H.074.39	SET OF 'O' RINGS	1	83
64	2H.074.54	SET OF HOSES	1	84

TITLE: - AIR CLEANER (04.587) MOUNTING ARRANGMENT FOR 2R1040 ENGINE (INTERNACO) WITH ALLUMINIUM MANIFOLD

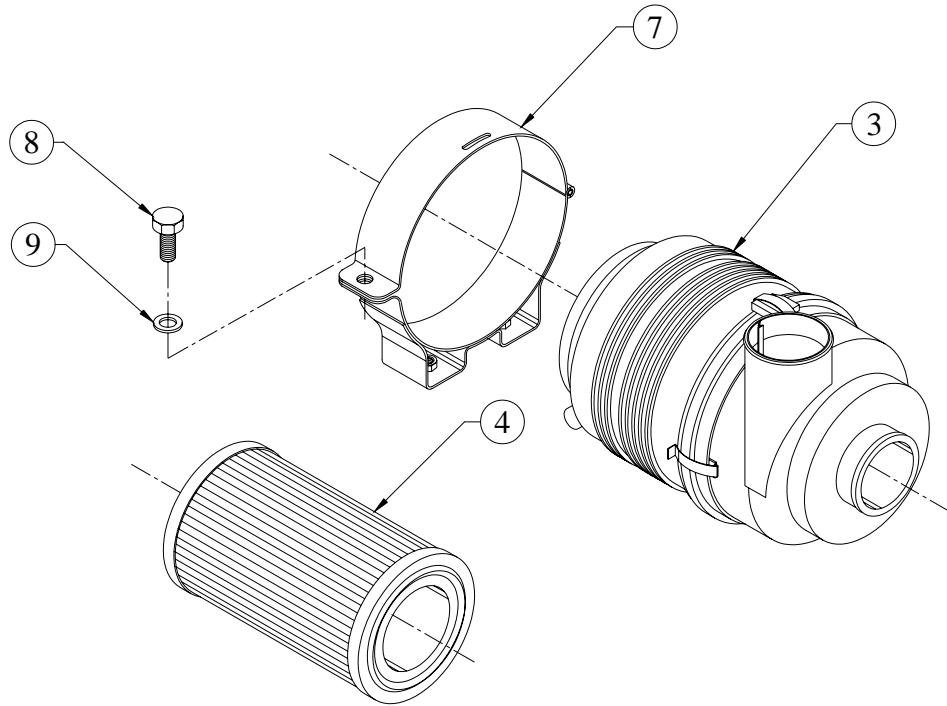
GROUP: - 2H.127.1



SR.NO.	PART NO.	DESCRIPTION	QTY.	REMARKS
1	2H.277.01.0.00	AIR CLEANER MOUNTING BRACKET FOR 2R1040 INTERNACO (S/F SAE-1 FIYWHEEL HOUSING)	1	
2	50.003.10.025.	SET SCREW - M10X1.5X25 - 8.8	6	
3	50.506.10.000.	PLAIN MACHINED WASHER - M10	4	
*4	4H.404.10.0.00	SUBASSEMBLY OF HOSE	1	CONSISTING OF SR. NO. 5 & 6
5	4H.404.02.0.00	HOSE FOR AIR CLEANER	1	
6	04.588.03.0.00	ADAPTOR FOR RESTRICTION INDICATOR	1	
7	48.305.07.0.00	JUPITER WORM DRIVE CLAMP, TYPE 603,80mm DIA(S/F 80mm HOSE O.D.)	2	
8	04.588.05.0.00	RESTRICTION INDICATOR (M10 x 1.5)	1	
9	50.548.10.000.	SPECIAL WASHER	4	
10	50.006.10.000.	NUT - M10X1.5 - GR.8	2	

TITLE: - AIR CLEANER (04.587) MOUNTING ARRANGMENT FOR 2R1040 ENGINE (VISA ENERGY) WITH ALLUMINIUM MANIFOLD

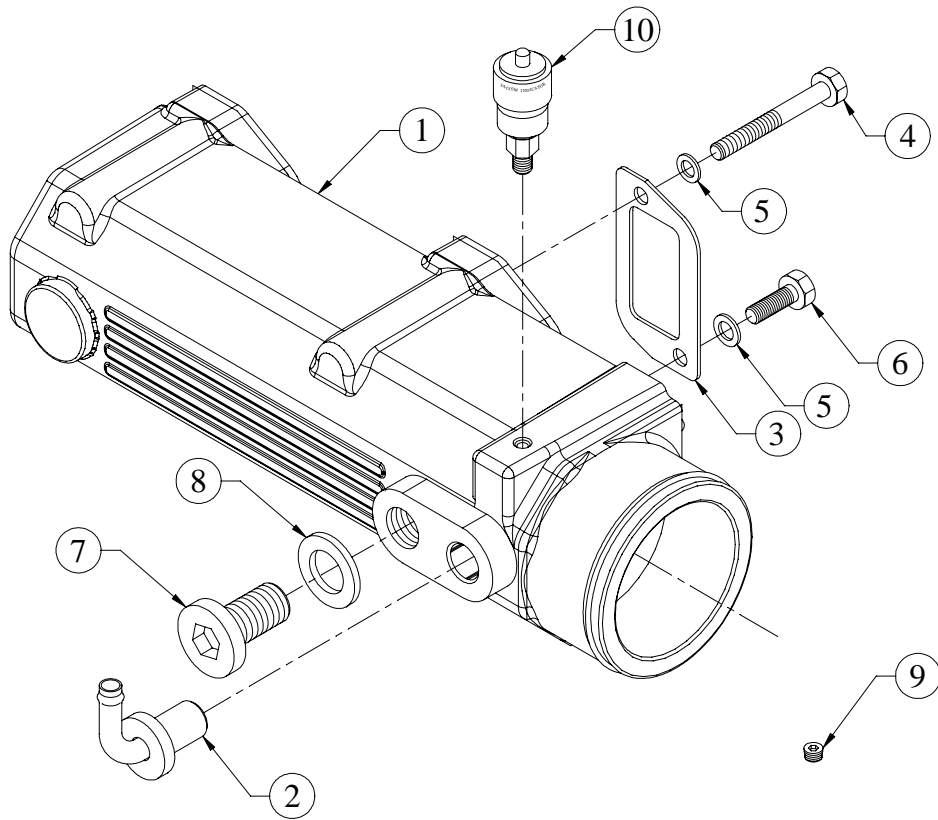
GROUP: - 2H.279



SR.NO.	PART NO.	DESCRIPTION	QTY.	REMARKS
*1	2H.279.10.0.00	ASSEMBLY OF AIR CLEANER (AIR CLEANER + STRAP)	1	CONSISTING OF SR. NO. 2 & 6
*2	04.587.10.0.00	ASSEMBLY OF DRY TYPE AIR CLEANER WITHOUT SAFETY ELEMENT	1	CONSISTING OF SR. NO. 3 TO 5
3	04.586.02.0.00	AIR CLEANER HOUSING	1	
4	04.586.03.0.00	MAIN ELEMENT FOR AIR CLEANER	1	
*5	04.586.05.0.00	VACUATOR VALVE FOR AIR CLEANER	1	NOT ILLUSTRATED
*6	2H.279.20.0.00	ASSEMBLY OF STRAP FOR DRY TYPE AIR CLEANER (04.586/04.587)	1	CONSISTING OF SR. NO. 7 TO 9
7	2H.279.01.0.00	AIR CLEANER MOUNTING STRAP FOR 2R1040 (VISA ENERGY)	1	
8	50.003.08.010.	SET SCREW - M8X1.25X10 - 8.8	1	
9	50.506.08.000.	PLAIN MACHINED WASHER - M8	1	

TITLE: - AIR INLET MANIFOLD FOR PCV

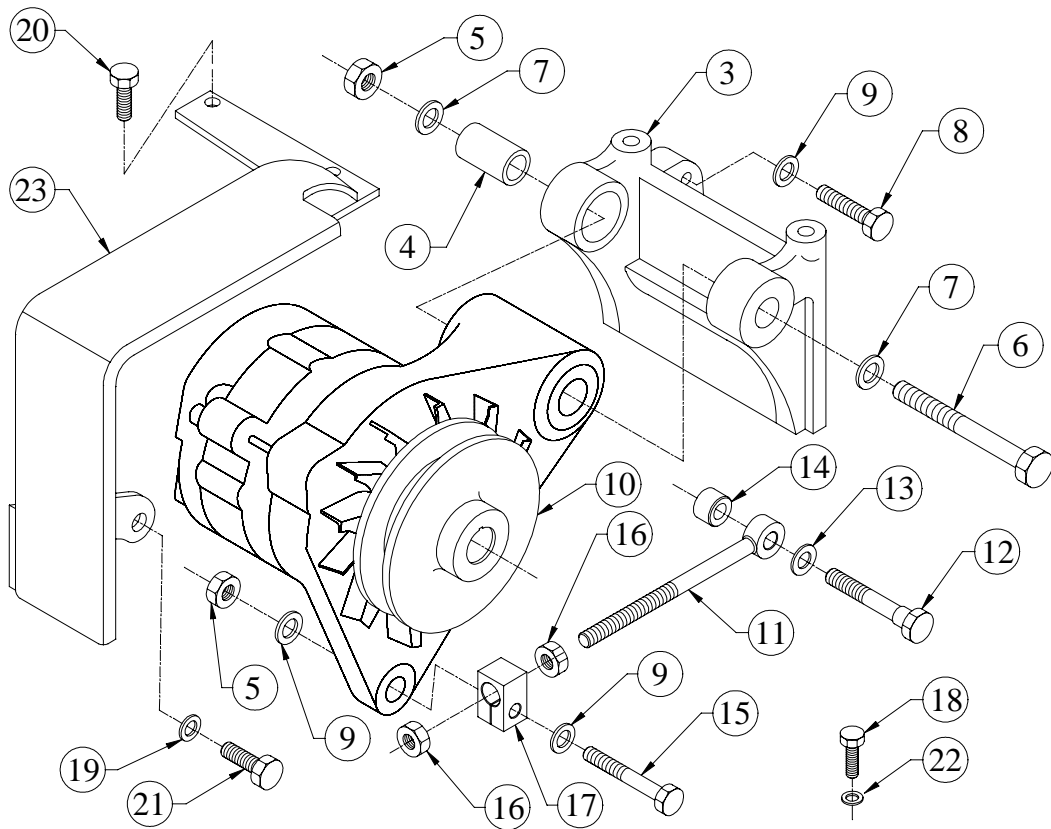
GROUP: - 2H.203...EXP



SR.NO.	PART NO.	DESCRIPTION	QTY.	REMARKS
1	2H.203.01.0.00	INLET MANIFOLD (MACHINING)	1	
2	2H.203.10.0.00	ASSEMBLY FOR BREATHER INLET	1	
3	2H.032.11.0.00	JOINT FOR AIR INLET MANIFOLD	1	
4	50.002.08.090.	SET BOLT - M8X1.25X90 - 8.8	2	
5	50.506.08.000.	PLAIN MACHINED WASHER - M8	4	
6	50.003.08.025.	SET SCREW - M8X1.25X25 - 8.8	2	
7	04.001.04.0.00	SCREW PLUG (M20 X 1.5)	1	
8	50.508.18.000.	COPPER WASHER (20X24)	1	
9	50.056.02.000.	HEADLESS PIPE PLUG 1/8"-27 NPTF	1	
10	47.113.15.0.00	RESTRICTION INDICATOR - 20"W.G.	1	

TITLE :- ALTERNATOR MOUNTING AND BLT GAURD (TURBO)

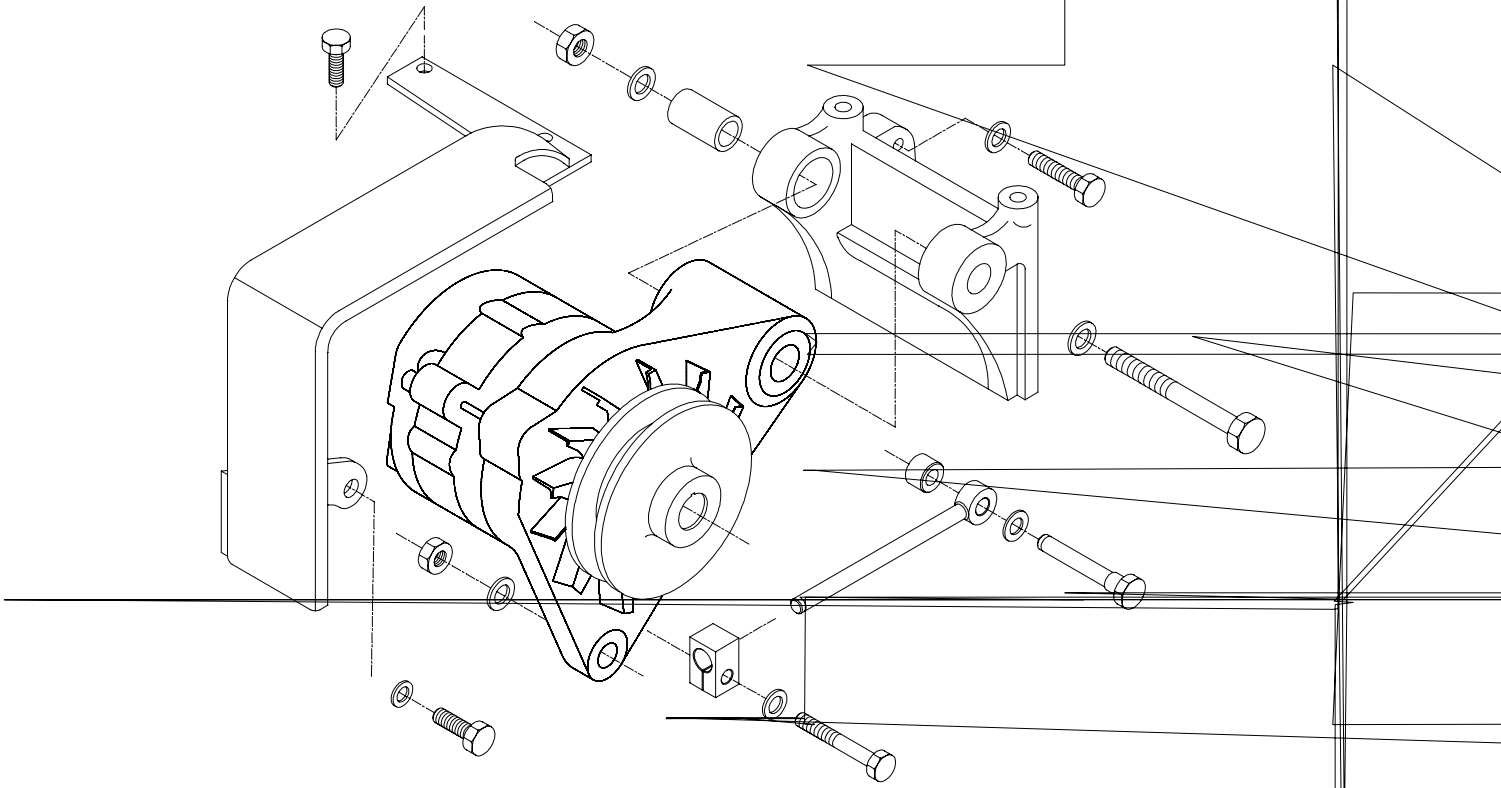
GROUP :- 4H.198



SR.NO.	PART NO.	DESCRIPTION	QTY.	REMARKS
*1	4H.198.10.0.00	ALTERNATOR MOUNTING KIT	1	CONSISTING OF SR. NO.- 2 8 TO 19
*2	4H.044.20.0.00	MOUNTING SUBASLY. FOR ALTERNATOR	1	CONSISTING OF SR. NO.- 3 TO 7
3	48.175.07.0.00	BKT.FOR ALT	1	
4	48.067.04.0.00	BUSH FOR ALTERNATOR (IN BRACKET)	1	
5	50.006.10.000.	NUT - M10X1.5 - GR.8	1	
6	48.067.03.7.00	DOWEL BOLT FOR ALTERNATOR	1	
7	50.506.10.000.	PLAIN MACHINED WASHER - M10	2	
8	50.003.10.040.	SET SCREW - M10X1.5X40 - 8.8	2	
9	50.506.10.000.	PLAIN MACHINED WASHER - M10	6	
10	3H.041.02.0.00	PULLEY FOR ALTERNATOR (SPA 68 PCD)	1	
11	4H.329.24.0.00	EYE BOLT	1	
12	4H.198.02.0.00	LOCATING BOLT (FOR EYE BOLT)	1	
13	50.506.12.000.	PLAIN MACHINED WASHER - M12	1	
14	4H.198.03.0.00	SPACER (FOR EYE BOLT)	1	

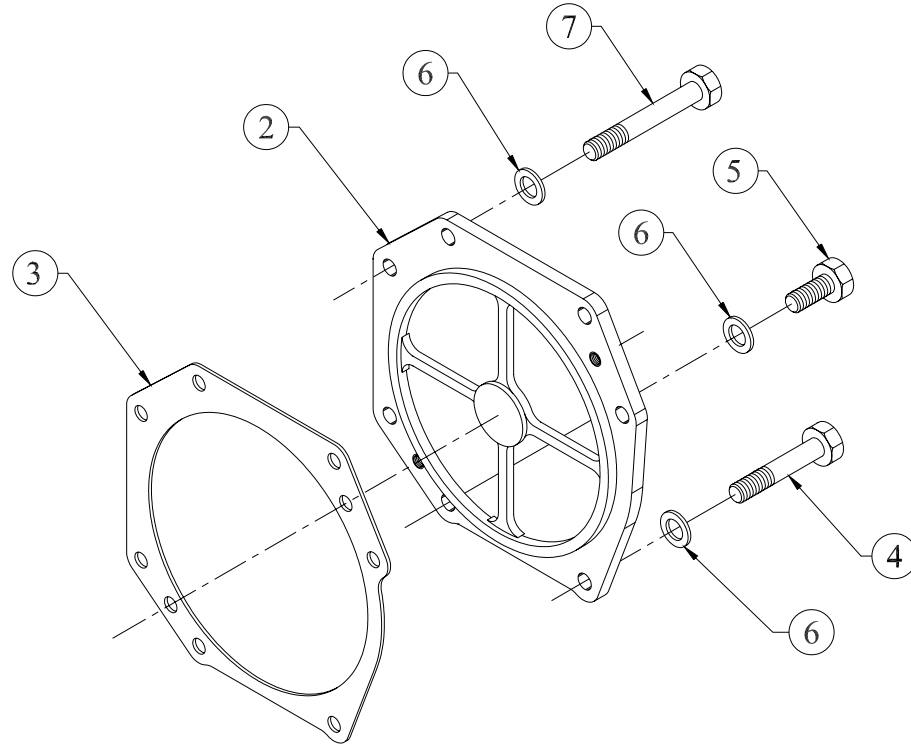
TITLE :- ALTERNATOR MOUNTING AND BLT GAURD (TURBO)

GROUP :- 4H.198



TITLE :- COVER FOR FUEL PUMP GEAR (PG)

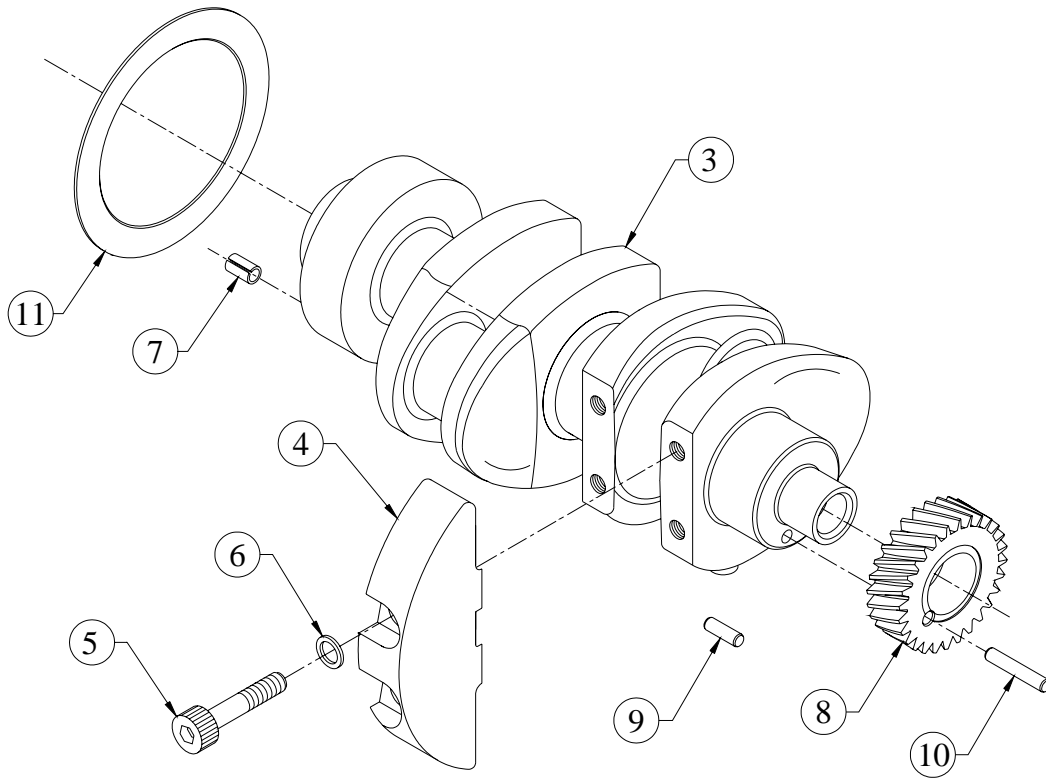
GROUP :- 4H.266...EXP



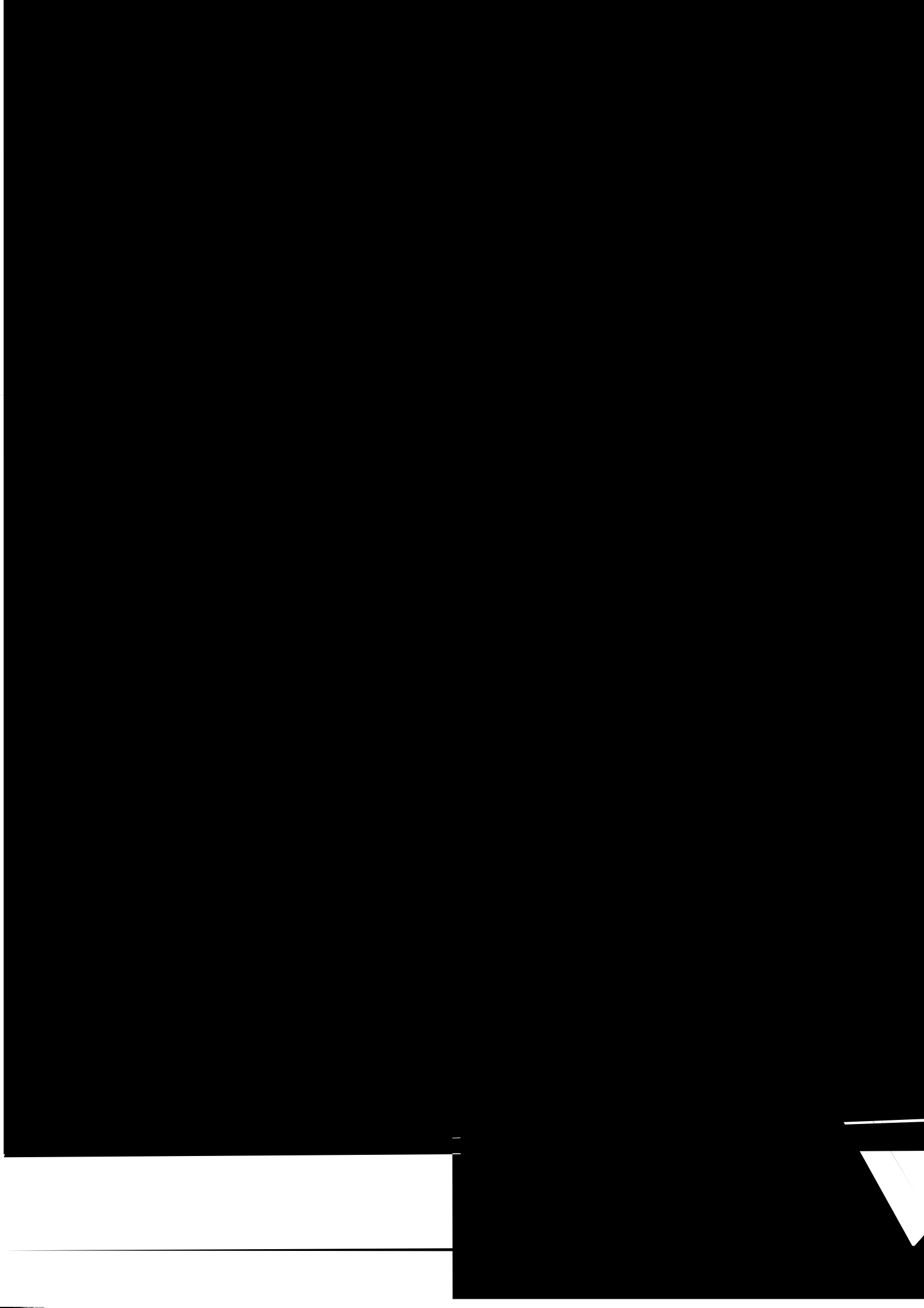
SR.NO.	PART NO.	DESCRIPTION	QTY.	REMARKS
*1	4H.266.10.0.00	COVER FOR FUEL PUMP GEAR WITH JOINT (USA)	1	CONSISTING OF SR NO.- 2 & 3
2	2H.017.03.0.00	COVER FOR FUEL PUMP GEAR	1	
3	2H.017.11.0.00	JOINT FOR FUEL PUMP GEAR	1	
4	50.002.08.045	SET BOLT - M8X1.25X45 - 8.8	3	
5	50.003.08.020	SET SCREW - M8X1.25X20 - 8.8	2	
6	50.506.08.000	PLAIN MACHINED WASHER - M8	7	
7	50.002.08.065	SET BOLT - M8X1.25X65 - 8.8	2	

TITLE:- CRANK SHAFT

GROUP:- 2H.002

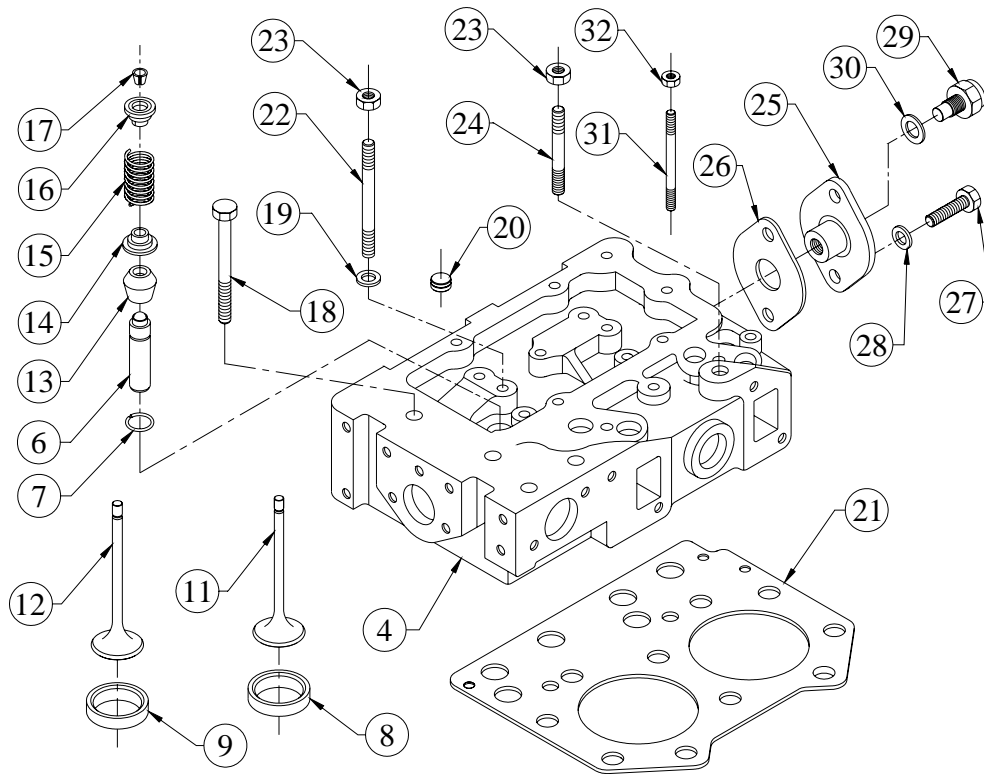


SR.NO.	PART NO.	DESCRIPTION	QTY.	REMARKS
*1	2H.002.10.0.00	CRANK SHAFT WITH GEAR	1	CONSISTING OF SR. NO. 2, 8 TO 11
*2	2H.002.20.0.00	CRANK SHAFT W/O GEAR	1	CONSISTING OF SR. NO. 3 TO 7
3	02.053.03.0.00	CRANK SHAFT (EN 9)	1	
4	02.053.02.0.00	HA2 COUNTER WEIGHT (F)	4	
5	04.005.12.0.00	SOCKET HEAD BOLT - M12X1.75X60 -10.9	8	
6	02.005.04.0.00	WASHER	8	
7	50.540.11.018	SPRING DOWEL	1	
8	4H.002.01.0.00	CRANK SHAFT GEAR (FINISH)	1	
9	50.401.08.025	DOWEL PIN 8X25	1	
10	50.401.08.060	DOWEL PIN 8X60	1	
11	P2.020.09.0.00	DEFLECTOR FOR FWE OIL SEAL	1	



TITLE:- CYLINDER HEAD

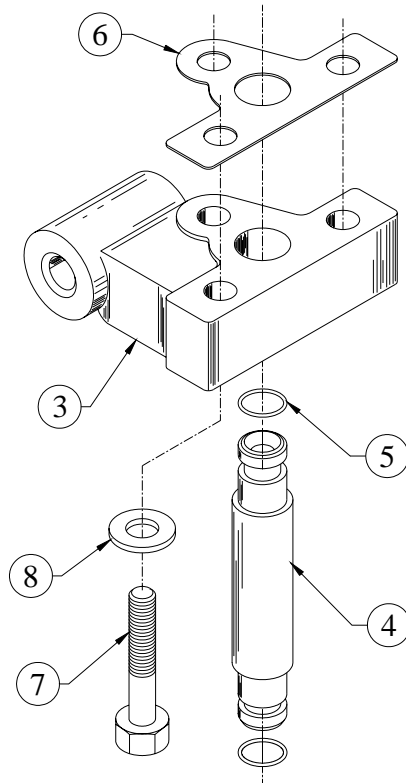
GROUP:- P3.007



SR.NO.	PART NO.	DESCRIPTION	QTY.	REMARKS
12	4H.007.06.0.00	EXHAUST VALVE.	2	
13	06.631.02.0.00	VALVE SEAL	4	
14	34.013.13.0.00	CUP FOR VALVE SPRING.	4	
15	02.022.13.0.00	VALVE SPRING	4	
16	02.022.11.0.00	VALVE CUP	6	
17	02.022.12.0.00	VALVE COLLET	8	
18	4H.007.07.0.00	BOLT FOR CYLINDER HEAD.	14	
19	50.506.10.000.	PLAIN MACHINED WASHER - M10	4	
20	4H.007.08.0.00	BUTTON FOR INJECTOR YOKE.	2	
21	P1.007.09.0.00	CYL HEAD GASKET FOR 2 CYL ENGINE (THICKNESS 1.22)	1	
22	50.010.10.070.	STUD - M10X1.5X70 - 8.8	2	
23	50.006.10.000.	NUT - M10X1.5 - GR.8	6	
24	50.010.10.050.	STUD - M10X1.5X50 - 8.8	4	
25	4H.007.19.0.00	THREDED FLANGE (M14)	1	
26	4H.007.15.0.00	JOINT FOR THREADED FLANGE	1	
27	50.003.08.025.	SET SCREW - M8X1.25X25 - 8.8	2	
28	50.506.08.000.	PLAIN MACHINED WASHER - M8	5	

TITLE:- DELIVERY BODY

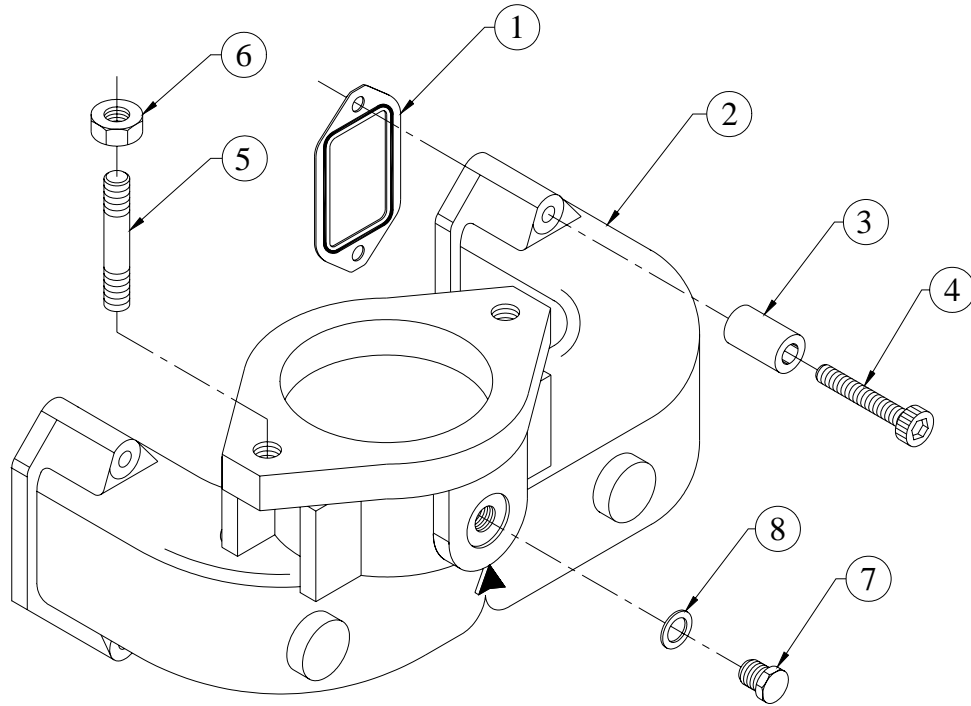
GROUP:- 2H.013...EXP



SR.NO.	PART NO.	DESCRIPTION	QTY.	REMARKS
*1	2H.013.20.0.00	DELIVERY BODY AND JOINT (NON ASBESTOS)	1	CONSISTING OF SR. NO. 2 & 6
*2	2H.013.10.0.00	DELIVERY BODY ASSEMBLY	1	CONSISTING OF SR. NO. 3 TO 5
3	2H.013.01.0.00	DELIVERY BODY (FINISH)	1	
4	2H.014.01.0.00	DELIVERY TUBE	1	
5	2H.014.02.0.00	O RING(FOR DELIVERY TUBE)	2	
6	2H.013.11.0.00	JOINT FOR DELIVERY BODY	1	
7	50.002.08.045.	SET BOLT - M8X1.25X45 - 8.8	3	
8	50.506.08.000.	PLAIN MACHINED WASHER - M8	3	

TITLE :- EXHAUST MANIFOLD FOR TRACTOR

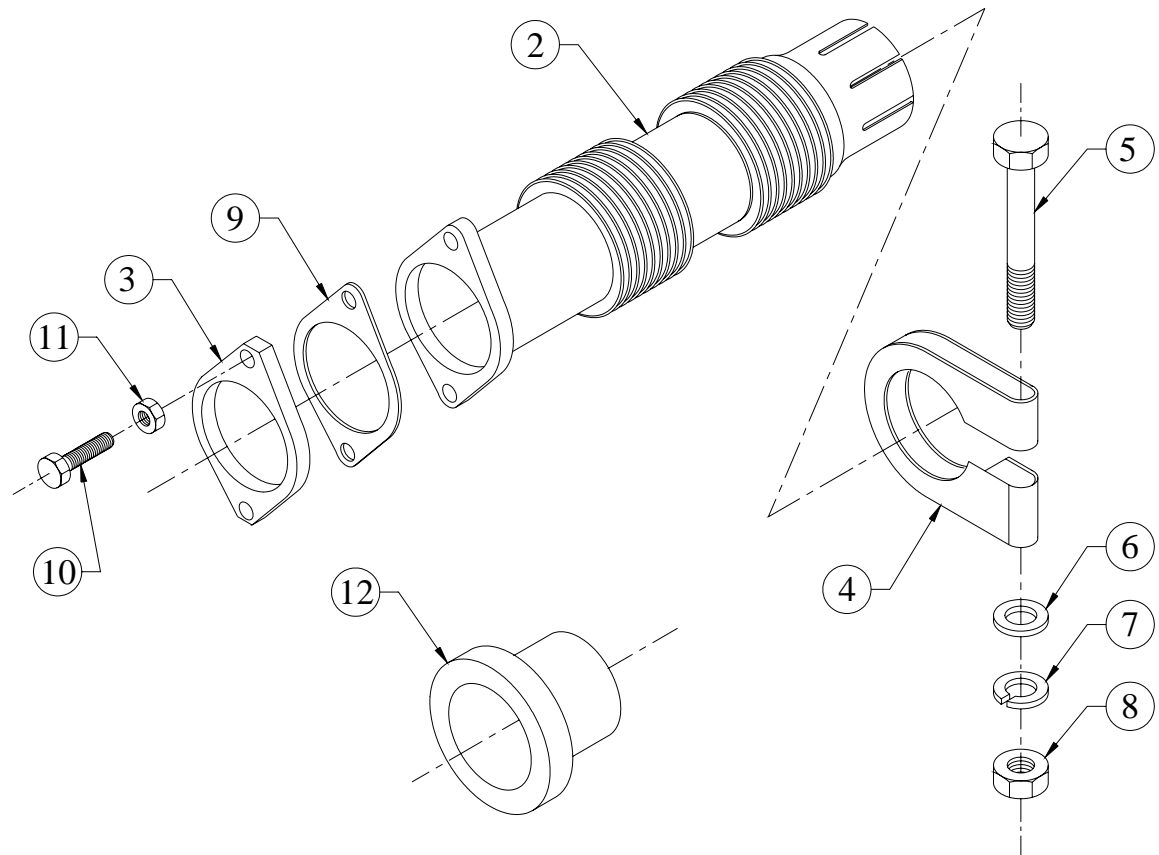
GROUP :- P1.036



SR.NO.	PART NO.	DESCRIPTION	QTY.	REMARKS
1	P5.036.02.0.00	JONT FOR EXHAUST MANIFOLD (NON ASBESTOS)	2	
2	P1.036.01.0.00	EXHAUST MANIFOLD FOR TRACTOR	1	
3	4H.107.02.0.00	SPACER(FOR EXT.MANIFOLD)	4	
4	50.011.08.075	SOCKET HEAD SCREW - M8X1.25X75 - 8.8	4	
5	50.010.08.025	STUD - M8X1.25X25 - 8.8	2	
6	50.006.08.000	NUT- M8X1.25 - GR.8	2	
7	50.610.10.000	CORE PLUG	1	
8	50.508.08.000	COPPER WASHER (10X16)	1	

TITLE :- EXPANSION BELLOW (2.5") & MTG.

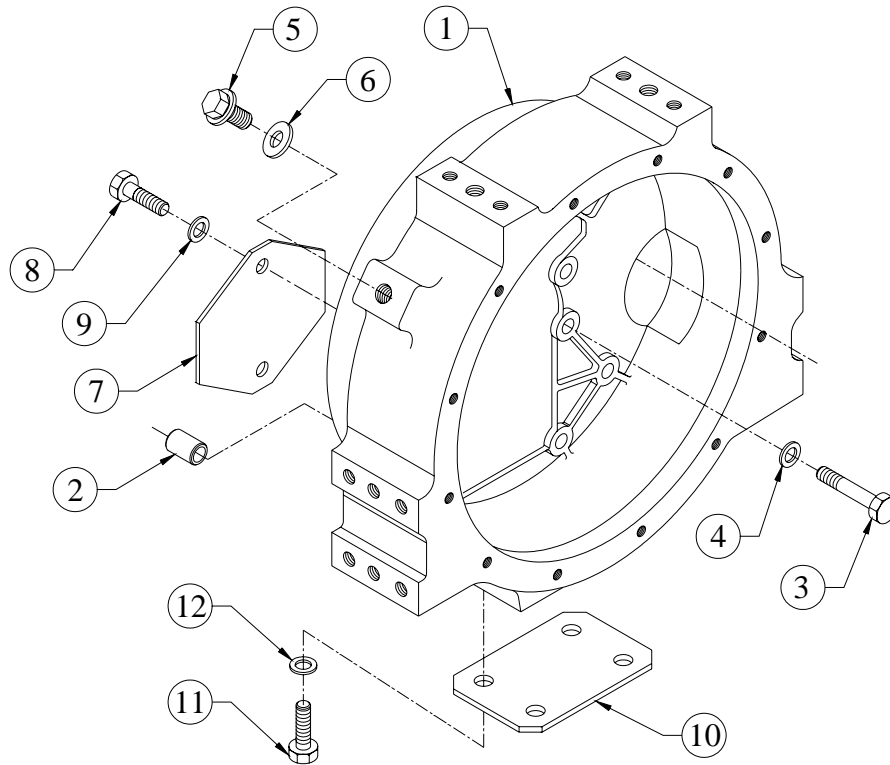
GROUP :- 46.357



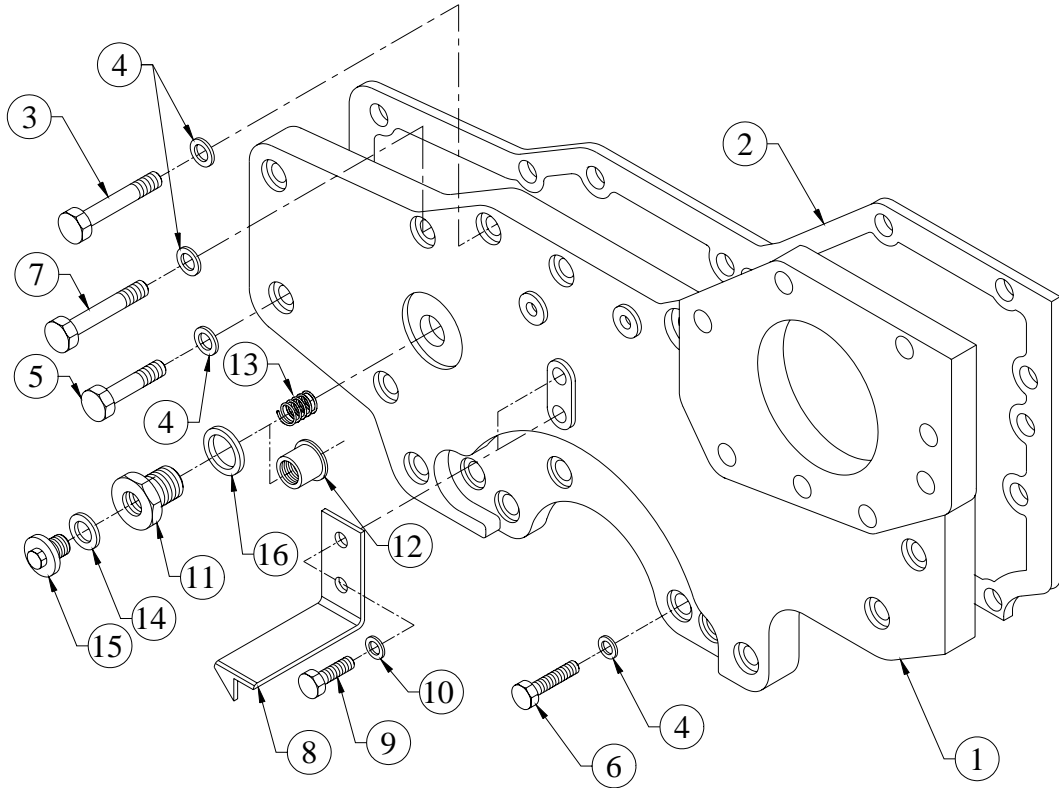
SR.NO.	PART NO.	DESCRIPTION	QTY.	REMARKS
*1	46.357.10.0.00	EXPANSION BELLOW ASSLY 2.5"	1	CONSISTING OF SR. NO.- 2 & 3
2	46.357.01.0.00	EXPANSION BELLOW 2.5"	1	
3	46.357.02.0.00	FLANGE FOE EXPANSION BELLOW 2.5"	1	
4	46.256.05.0.00	SILENSER CLAMP	1	
5	50.002.08.090.	SET BOLT - M8X1.25X90 - 8.8	1	
6	50.506.08.000.	PLAIN MACHINED WASHER - M8	1	
7	50.505.08.000.	SPRING WASHER - M8	1	
8	50.006.08.000.	NUT- M8X1.25 - GR.8	1	
9	34.107.06.0.00	JOINT FOR ADAPTOR ON EX.M'FOLD	1	
10	50.003.08.035.	SET SCREW - M8X1.25X35 - 8.8	2	
11	02.022.24.0.00	NUT(BRASS)	2	
12	46.367.03.0.00	SLEEVE FOR EXHAUST SILENCER(55.2 DIA)	1	

TITLE:- FLYWHEEL HOUSING SAE 1

GROUP:- 6H.065



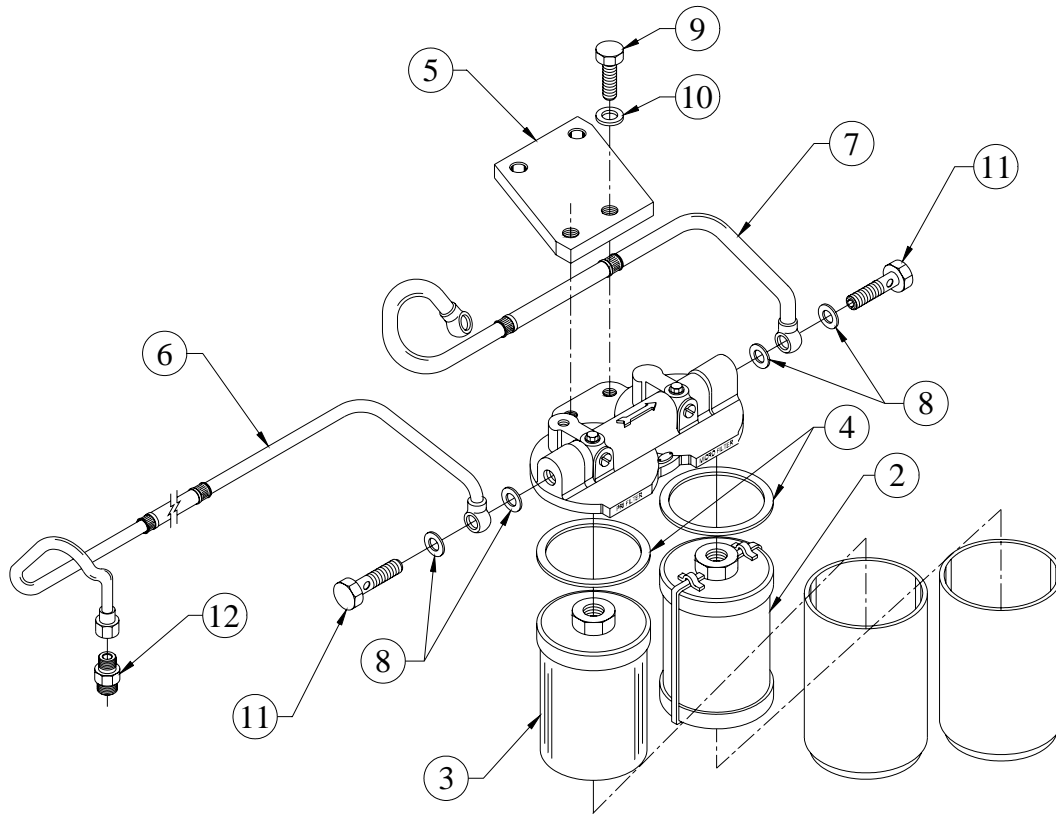
SR.NO.	PART NO.	DESCRIPTION	QTY.	REMARKS
1	6H.065.01.0.00	FLYWHEEL HOUSING (SAE 1) MACHINING	1	
2	4H.001.13.0.00	HOLLOW DOWEL (16 DIA)	2	
3	50.052.10.030.	SET BOLT-M10X30-10.9	8	
4	02.024.09.0.00	WASHER	8	
5	50.602.16.000.	CORE PLUG 16X1.5	1	
6	50.508.15.000.	COPPER WASHER (17X23)	1	
7	4H.038.03.0.00	BLANKING PLATE FOR OVERSPEED SENSOR.	1	
8	50.003.06.012.	SET SCREW - M6X1X12 - 8.8	2	
9	50.506.06.000.	PLAIN MACHINED WASHER - M6	2	
10	03.086.02.0.00	COVER FOR FLY WHEEL HSG	1	
11	50.003.08.016.	SET SCREW - M8X1.25X16 - 8.8	4	
12	50.506.08.000.	PLAIN MACHINED WASHER - M8	4	

TOTAL: - FRONT COVER FOR PG APPLICATION**GROUP: - 4H.179...EXP**

SR.NO.	PART NO.	DESCRIPTION	QTY.	REMARKS
1	4H.179.01.0.00	FRONT COVER(W/O HYD. PUMP MNTG.)	1	
2	2H.037.11.0.00	JOINT (FRONT COVER)	1	
3	50.002.08.100.	SET BOLT - M8X1.25X100 - 8.8	4	
4	50.506.08.000.	PLAIN MACHINED WASHER - M8	18	
5	50.002.08.030.	SET BOLT - M8X1.25X30 - 8.8	4	
6	50.003.08.025.	SET SCREW - M8X1.25X25 - 8.8	5	
7	50.002.08.035.	SET BOLT - M8X1.25X35 - 8.8	5	
8	2H.037.06.0.00	TIMING POINTER	1	
9	50.003.06.012.	SET SCREW - M6X1X12 - 8.8	2	
10	50.506.06.000.	PLAIN MACHINED WASHER - M6	2	
11	03.117.04.0.00	ADAPTOR (FOR TD UNIT)	1	
12	03.014.07.0.00	CUP FOR SPRING	1	
13	03.014.06.0.00	SPRING FOR CUP	1	
14	50.508.27.000.	COPPER WASHER (24X29)	1	
15	34.001.11.0.00	DRAIN PLUG (F)	1	
16	50.508.16.000	COPPER WASHER (18 X 22)	1	

**TITLE: - FUEL FILTER AND MTG S/F 2R1040
ON SAE1 FLYWHEEL HOUSING**

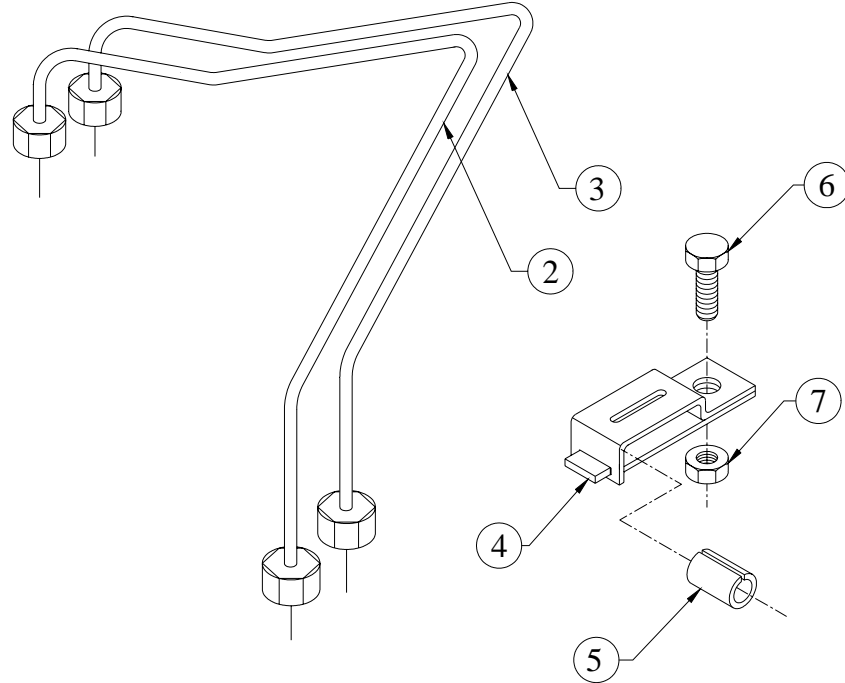
GROUP: - 2H.103.1



SR.NO.	PART NO.	DESCRIPTION	QTY.	REMARKS
*1	3H.132.10.0.00	SPIN ON FUEL FILTER (TWIN BOWL, 0.6 LIT.)	1	CONSISTING OF SR. NO. 2 TO 4
2	3H.132.01.0.00	PRIMARY ELEMENT	1	
3	3H.132.02.0.00	SECONDARY ELEMENT	1	
4	3H.132.03.0.00	SEALING RING (FUEL FILTER)	2	
5	2H.103.05.0.00	FUEL FILTER MOUNTING BRACKET FOR 2R1040 INTERNACO	1	
6	2H.116.01.0.00	FUEL PIPE (FEED PUMP TO FUEL FILTER)	1	
7	2H.116.02.0.00	FUEL PIPE	1	
8	50.565.14.000.	INTERNAL RUBBER LIP SEALING WASHER -M14- FOR FUEL LINES	4	
9	50.003.12.030.	SET SCREW - M12X1.75X30 - 8.8	2	
10	50.506.12.000.	PLAIN MACHINED WASHER - M12	2	
11	50.504.04.000.	BANJO BOLT - M14X1.5	2	
12	4H.486.05.0.00	ADAPTOR M14 X M16 U	1	

TITLE :- FUEL INJECTION PIPE

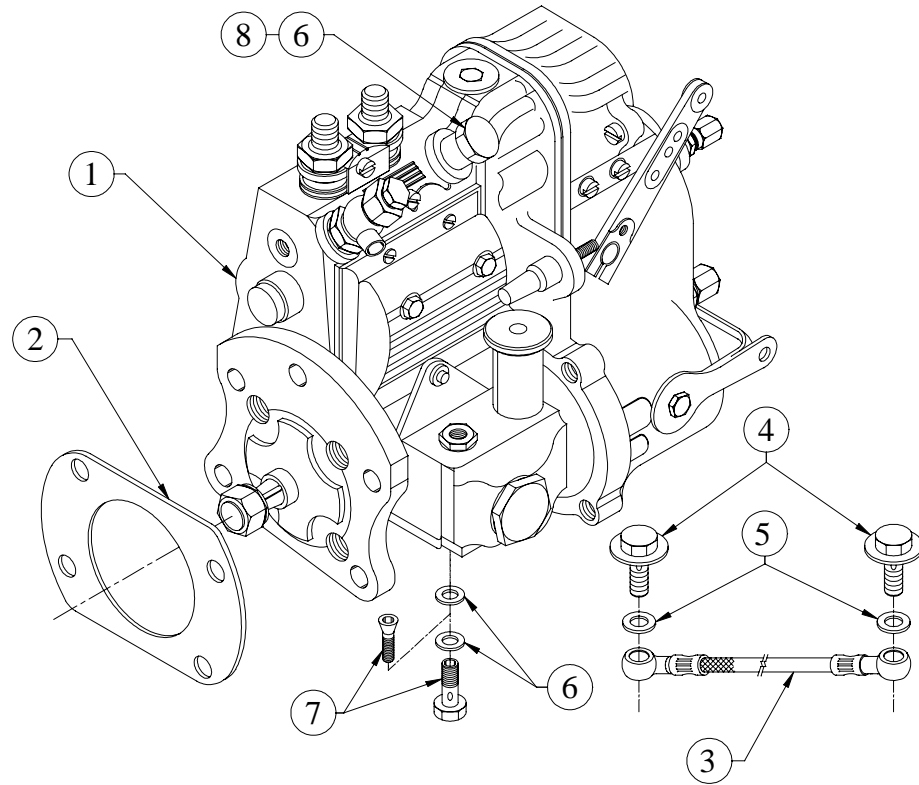
GROUP :- P1.011



SR.NO.	PART NO.	DESCRIPTION	QTY.	REMARKS
*1	P1.011.10.0.00	H.P PIPE ASSLY. (WITH PIPE CLIP)	1	CONSISTING OF SR. NO. 2 TO 7
2	P1.011.20.0.00	H.P. PIPE FOR CYL. NO.1	1	
3	P1.011.30.0.00	H.P PIPE CYL.NO 2	1	
4	50.541.01.000.	PIPE CLIP (FOR 2 PIPES)	1	
5	02.036.03.0.00	RUBBER SLEEVE	2	
6	50.003.06.012.	SET SCREW - M6X1X12 - 8.8	1	
7	50.006.06.000.	NUT - M6X1 - GR.8	1	

TITLE:- FUEL PUMP FOR 4% GOVERNING

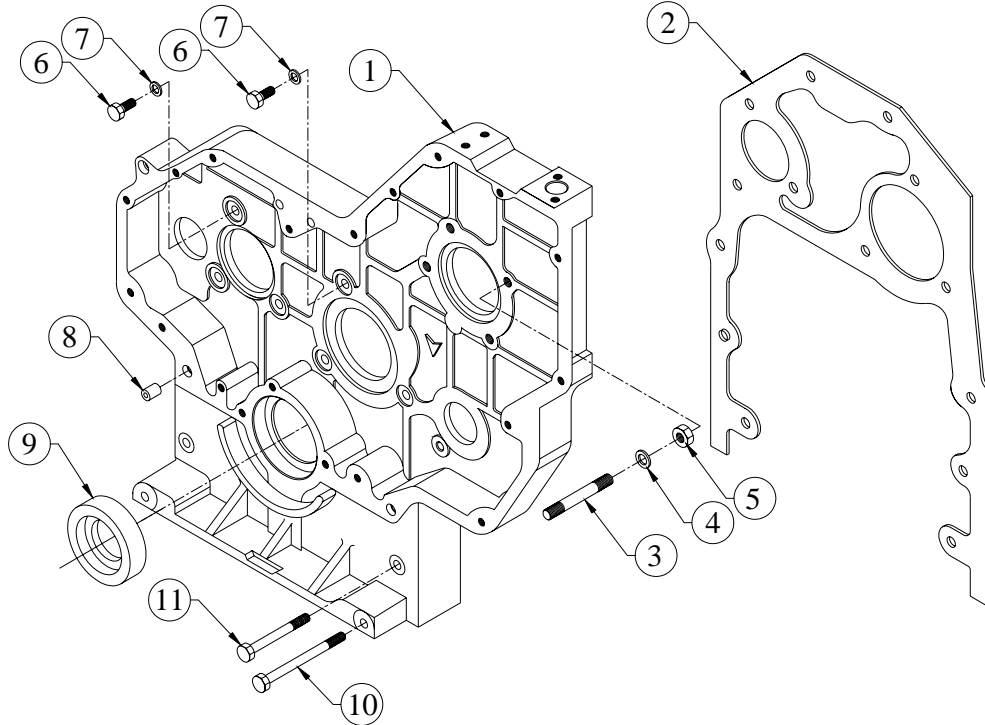
GROUP:- 2H.048...EXP



SR.NO.	PART NO.	DESCRIPTION	QTY.	REMARKS
1	2H.048.10.0.00	PG FIP MICO NO E040156300	1	
2	34.016.12.0.00	JOINT FOR FUEL PUMP (NON ASBESTOS)	1	
3	48.417.01.0.00	LUB OIL SUPPLY HOSE (FOR FIP)	1	
4	03.660.07.0.00	SPECIAL BANJO BOLT (L.O.SUPPLY TO PUMP)	2	
5	50.508.07.000	COPPER WASHER (10X14)	4	
6	50.565.14.000	INTERNAL RUBBER LIP SEALING WASHER -M14- FOR FUEL LINES	6	
7	34.016.15.0.00	BANJO BOLT WITH STRAINER (2 443 456 900)	1	
8	50.504.04.000	BANJO BOLT - M14X1.5	2	

TITLE: - GEAR CASING WITH DEFLECTOR

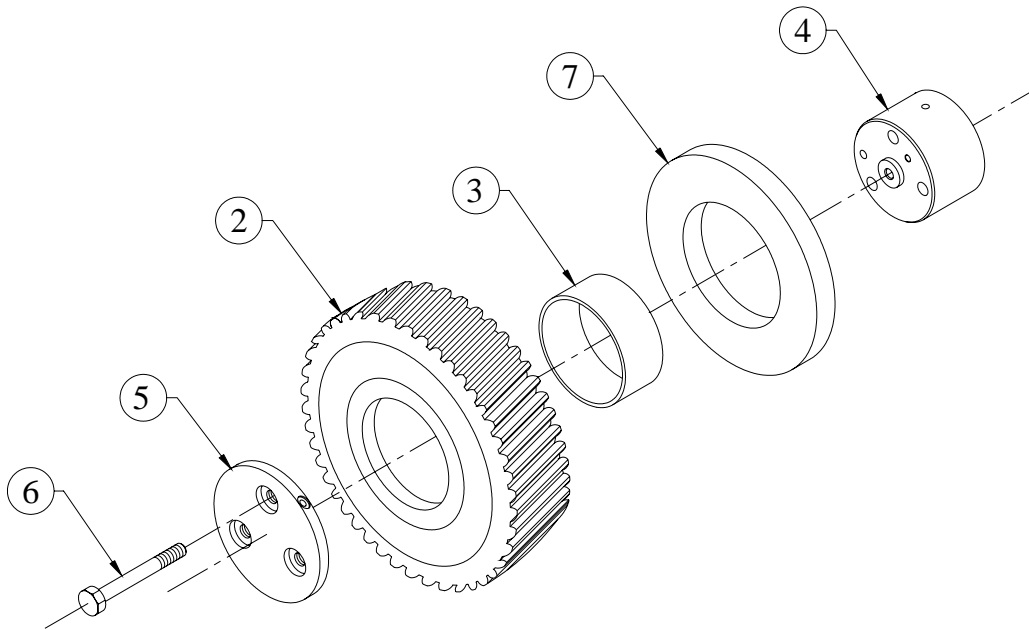
GROUP: - 4H.1074...EXP



SR.NO.	PART NO.	DESCRIPTION	QTY.	REMARKS
1	4H.178.02.0.00	GEAR CASING (MACHINING)	1	
2	2H.005.11.0.00	JOINT FOR GEAR COVER	1	
3	50.010.10.030.	STUD - M10X1.5X30 - 8.8	4	
4	03.001.25.0.00	WASHER (FOR FUEL PUMP MTG)	4	
5	50.006.10.000.	NUT - M10X1.5 - GR.8	4	
6	50.003.08.025.	SET SCREW - M8X1.25X25 - 8.8	6	
7	50.506.08.000.	PLAIN MACHINED WASHER - M8	10	
8	34.001.23.0.00	DOWEL FOR GEAR CASING	2	
9	03.013.06.0.00	OIL SEAL (65X85X13)(CR MAKE)	1	
10	50.002.08.110.	SET BOLT - M8X1.25X110 - 8.8	2	
11	50.002.08.080.	SET BOLT - M8X1.25X80 - 8.8	2	

**TITLE :- INTERMEDIATE GEAR AND SUPPORT
(FOR ENGINE W/O AUTOTIMER)**

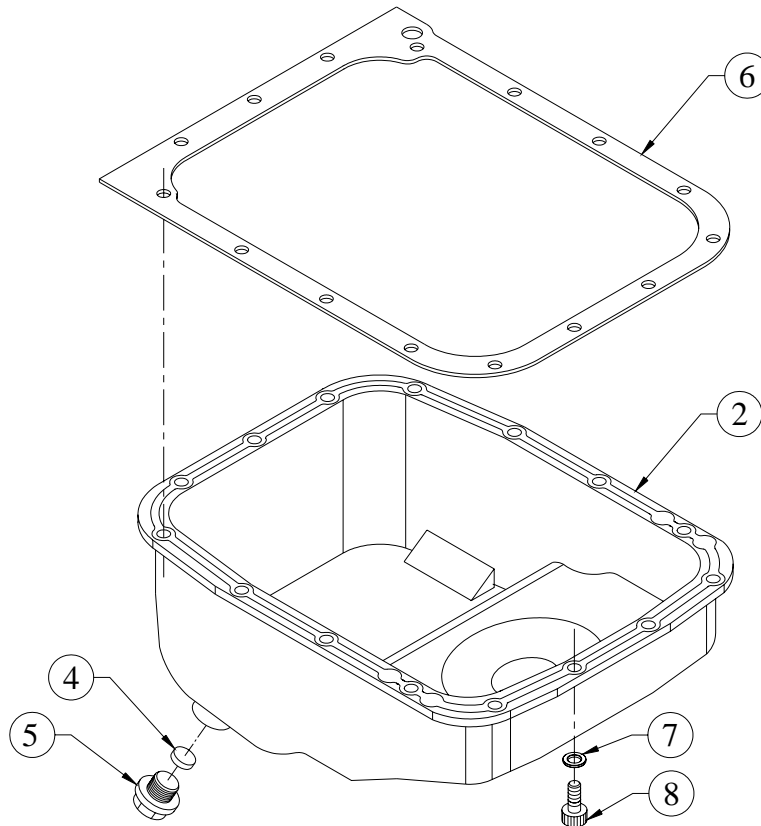
GROUP :- 4H.237



SR.NO.	PART NO.	DESCRIPTION	QTY.	REMARKS
*1	2H.038.10.0.00	ASSLY OF INTERMEDIATE GEAR & BUSH	1	CONSISTING OF SR.NO.2 & 3
2	2H.038.03.0.00	INTERMEDIATE GEAR (FINISH)	1	
3	2H.004.02.9.00	BUSH FOR INTERMEDIATE GEAR (S/F)	1	
4	4H.237.01.0.00	INTERMEDIATE GEAR SUPPORT (TURBO W/O AUTOTIMER)	1	
5	2H.004.04.0.00	RETAINING PLATE (FOR INT.GEAR)	1	
6	50.002.08.070	SET BOLT - M8X1.25X70 - 8.8	3	
7	2H.038.02.0.00	THRUST WASHER	1	

TITLE :- LUB OIL SUMP

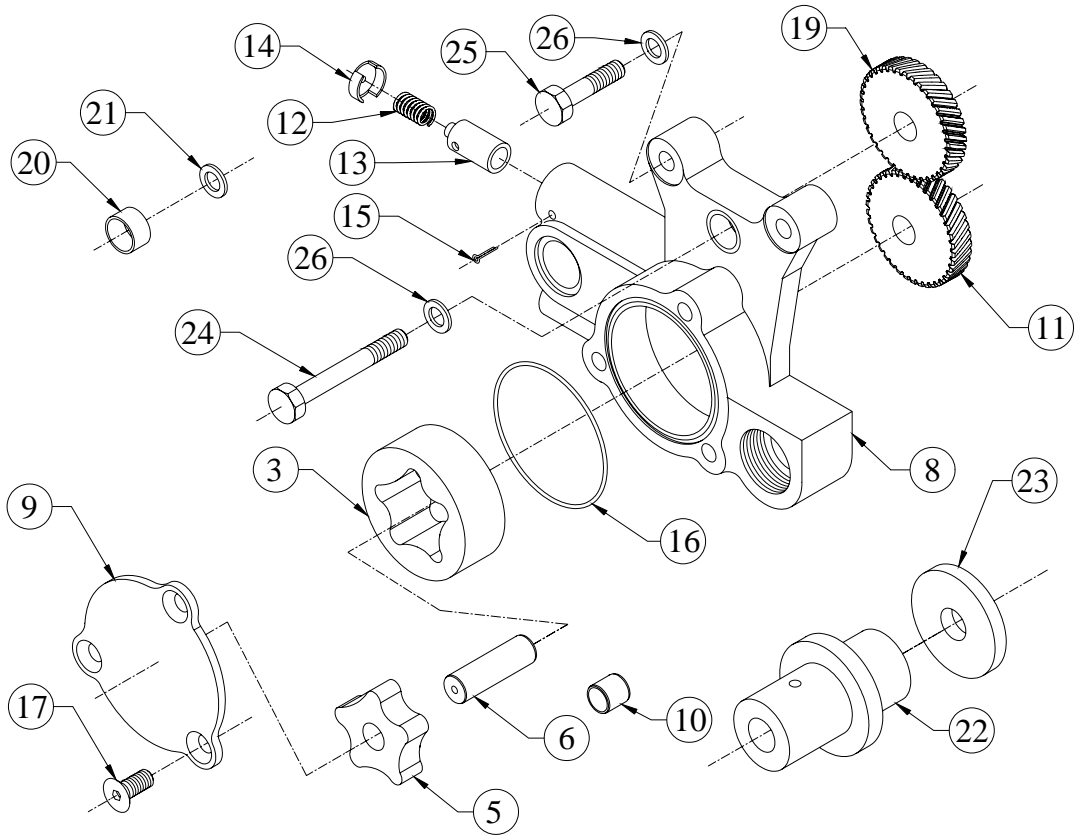
GROUP :- 2H.072...EXP



SR.NO.	PART NO.	DESCRIPTION	QTY.	REMARKS
*1	02.539.20.0.00	SUB ASSLY LUB OIL SUMP (PRESSED)	1	CONSISTING OF SR. NO. 2, 3
2	02.539.01.0.00	OIL SUMP (PRESSED)	1	
*3	2H.035.10.0.00	DRAIN PLUG ASSEMBLY.	1	CONSISTING OF SR. NO. 4, 5
4	34.051.01.0.00	MAGNET	1	
5	2H.035.01.0.00	PLUG.	1	
6	2H.072.02.0.PR	JOINT FOR LUB OIL SUMP (NON ASBESTOS)	1	
7	06.074.16.0.00	WASHER (SHEET METAL L.O.SUMP)	15	
8	50.011.08.016.	SOCKET HEAD SCREW - M8X1.25X16 - 8.8	15	

TITLE :- LUBE.OIL PUMP

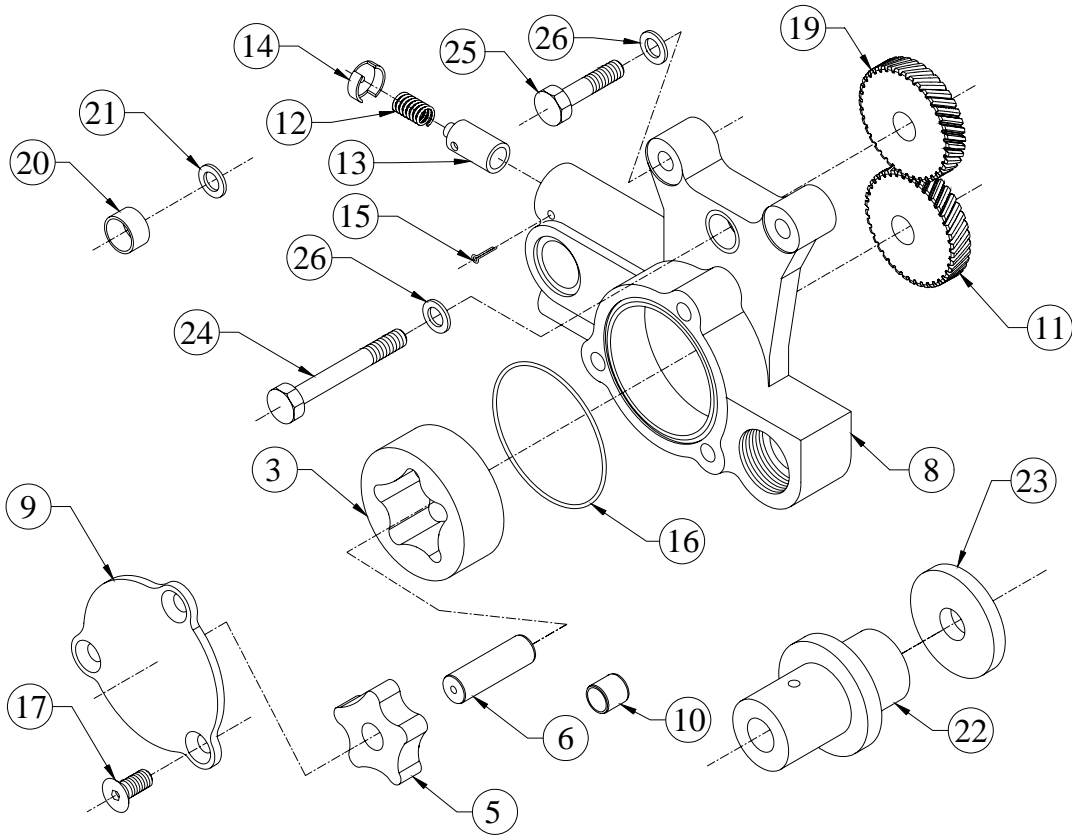
GROUP :- 3H.005



SR.NO.	PART NO.	DESCRIPTION	QTY.	REMARKS
*1	3H.005.50.0.00	LUB OIL PUMP SUB ASSEMBLY	1	CONSIST. OF SR. NO. 2,18 21 TO 24
*2	3H.005.10.0.00	LUBE.OIL PUMP ASSLY.	1	CONSIST. OF SR. NO. 3,4, & 7
3	03.010.17.0.00	OUTER ROTOR	1	
*4	3H.005.40.0.00	ROTOR SUB ASSLY.(W/O KEY)	1	CONSIST. OF SR. NO. 5 & 6
5	03.010.22.0.00	INNER ROTOR	1	
6	03.010.23.0.00	SHAFT FOR INNER ROTOR	1	
*7	3H.005.90.0.00	LUB OIL PUMP ASSEMBLY KIT	1	CONSIST. OF SR. NO. 8 TO 17
8	3H.005.01.0.00	L.O.PUMP BODY(COMPACT VERSION)(FINISH)	1	
9	06.010.02.0.00	COVER PLATE	1	
10	03.010.05.0.00	BUSH FOR L.O.PUMP BODY	1	
11	3H.005.04.0.00	LUB.OIL PUMP DRIVING GEAR(FINISH)	1	
12	03.010.14.0.00	SPRING FOR RELIEF VALVE	1	

TITLE :- LUBE.OIL PUMP

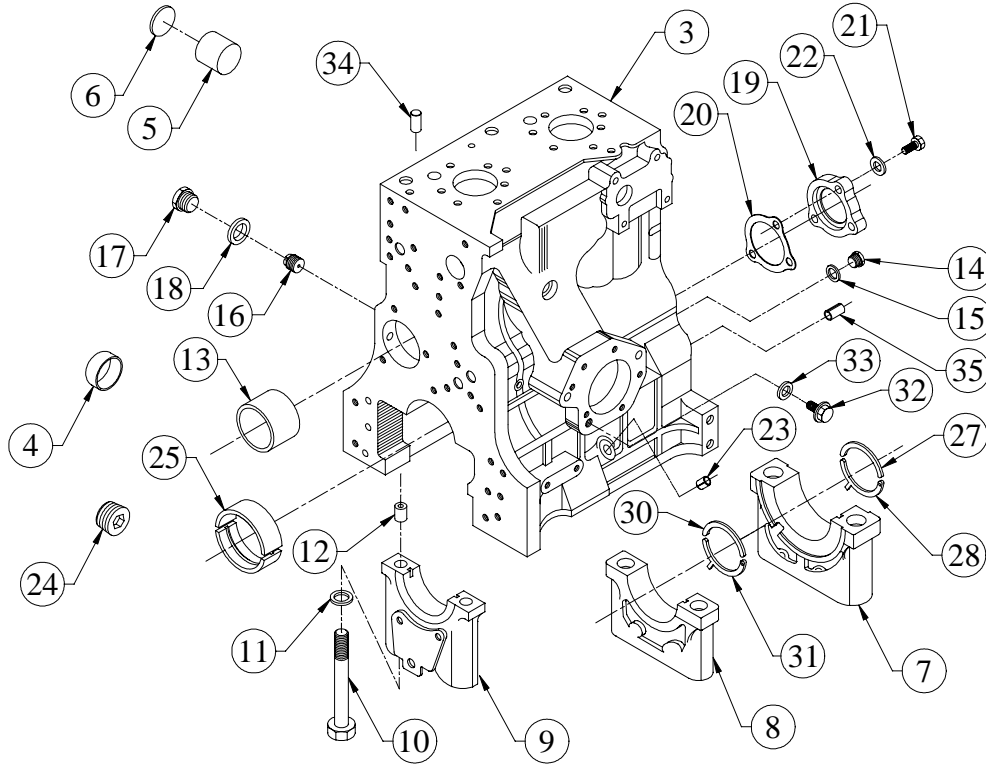
GROUP :- 3H.005



SR.NO.	PART NO.	DESCRIPTION	QTY.	REMARKS
13	03.010.13.0.00	RELIEF VALVE	1	
14	03.010.15.0.00	CUP FOR SPRING	1	
15	50.036.07.010.	SPLIT COTTER PIN - 1/8"X1-1/2"	1	
16	03.010.11.0.00	O RING - L.O.PUMP (1.57X65,21508)	1	
17	06.010.01.0.00	COUNTER SUNK SOCKET HEAD SCREW.	3	
*18	3H.005.30.0.00	SUB.ASSLY.OF L.O.PUMP INT.GEAR AND BUSH.	1	CONSIST. OF SR. NO. 19 & 20
19	3H.005.03.0.00	INTERMEDIATE GEAR (FOR L.O.PUMP) (FINISH)	1	
20	34.014.12.0.00	BUSH FOR LEVER	1	
21	02.024.38.0.00	WASHER (ROCKER LEVER)	1	
22	4H.372.01.0.00	SHAFT FOR LUB OIL PUMP (INTERMEDIATE GEAR)	1	
23	4H.372.02.0.00	HARD WASHER (FOR INT. GEAR)	1	
24	50.002.08.075.	SET BOLT - M8X1.25X75 - 8.8	1	
25	50.002.08.035.	SET BOLT - M8X1.25X35 - 8.8	2	
26	50.506.08.000.	PLAIN MACHINED WASHER - M8	3	

TITLE: - MONOBLOCK CRANKCASE

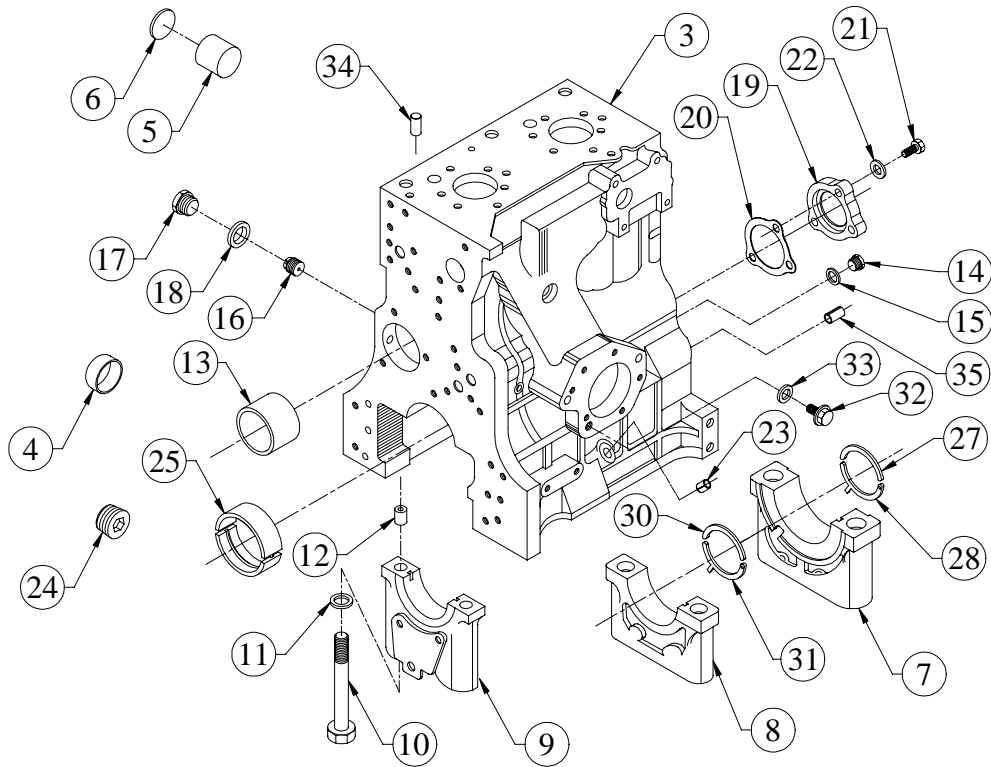
GROUP: - 2H.001...EXP



SR.NO.	PART NO.	DESCRIPTION	QTY.	REMARKS
*1	2H.001.40.0.00	CRANKCASE ASSLY (JOINT NON ASBESTOS)	1	CONSISTING OF 2 & 13 TO 24
*2	2H.001.30.0.00	CRANKCASE SUB ASSEMBLY	1	CONSISTING OF 3 TO 12
3	2H.001.01.0.00	CRANKCASE	1	
4	F6.001.58.0.00	SEALING CAP. (40 DIN 443)	2	
5	34.003.07.0.00	CRANK SHAFT PLUG- ALUMINIUM	2	
6	34.003.08.0.00	WASHER FOR ALU.PLUG.	2	
7	03.001.23.0.00	M.B.CAP (FWE) 16. 99 DIA. DOWEL HOLE	1	
8	03.001.24.0.00	M.B.CAP (KHD) 16. 99DIA DOWEL HOLES	1	
9	4H.001.02.0.00	BEARING CAP (GEAR END)(FINISH)	1	
10	03.001.22.0.00	BOLT FOR MB CAP (HEX HEAD) M14X2X128	6	
11	02.001.04.0.00	WASHER	6	
12	B2.005.16.0.00	HOLLOW DOWEL (M.B.CAP)	6	
13	03.001.04.0.00	CAM BUSH	1	

TITLE: - MONOBLOCK CRANKCASE

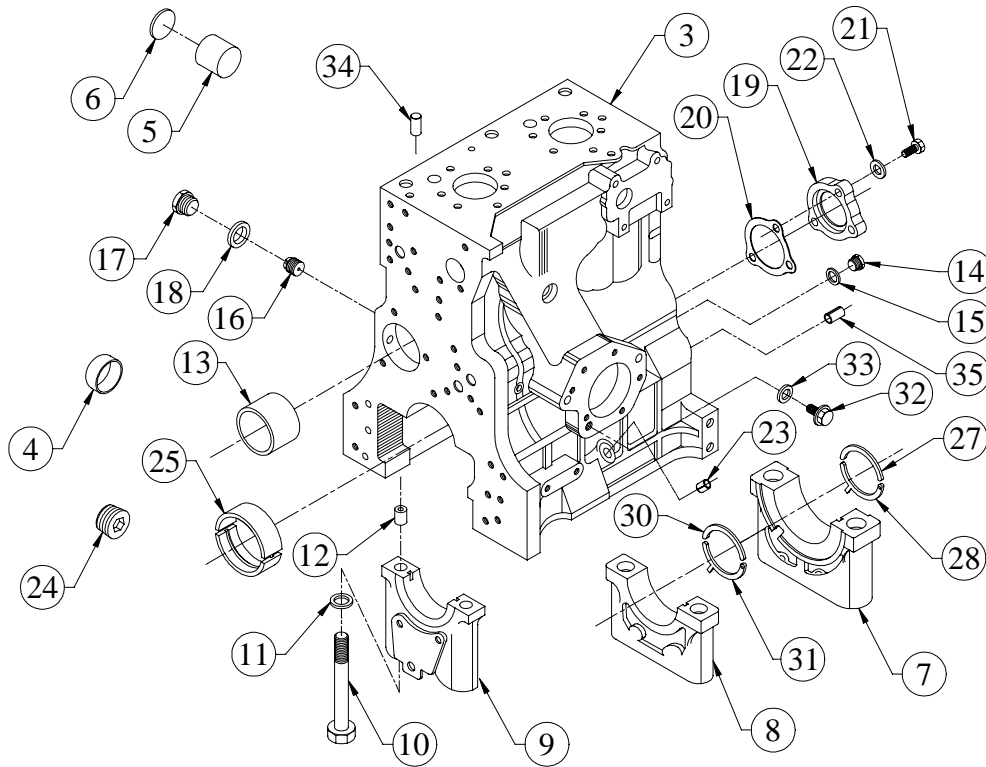
GROUP: - 2H.001...EXP



SR.NO.	PART NO.	DESCRIPTION	QTY.	REMARKS
14	04.001.04.0.00	SCREW PLUG (M20 X 1.5)	1	
15	50.508.18.000.	COPPER WASHER (20X24)	1	
16	03.001.07.0.00	SLOTTED PIN	3	
17	50.610.12.000.	CORE PLUG	3	
18	50.508.09.000.	COPPER WASHER (12X16)	3	
19	4H.001.03.0.00	BLANKING PLATE FOR CAM BORE	1	
20	4H.001.14.0.00	JOINT FOR CAM BORE BLANKING PLATE	1	
21	50.003.08.025.	SET SCREW - M8X1.25X25 - 8.8	3	
22	50.506.08.000.	PLAIN MACHINED WASHER - M8	3	
23	02.037.04.0.00	DIPSTICK GUIDE	1	
24	50.056.06.000.	HEADLESS PIPE PLUG 1/2"-14 NPTF	1	
25	02.001.07.0.00	MAIN BRG TOP & BOTTOM (BEARING PART NO. * M-093400003)	3	
*26	03.001.18.0.00	THRUST RING PAIR-DRIVE END, (102 DIA.)	1	CONSISTING OF SR. NO 27 & 28.

TITLE: - MONOBLOCK CRANKCASE

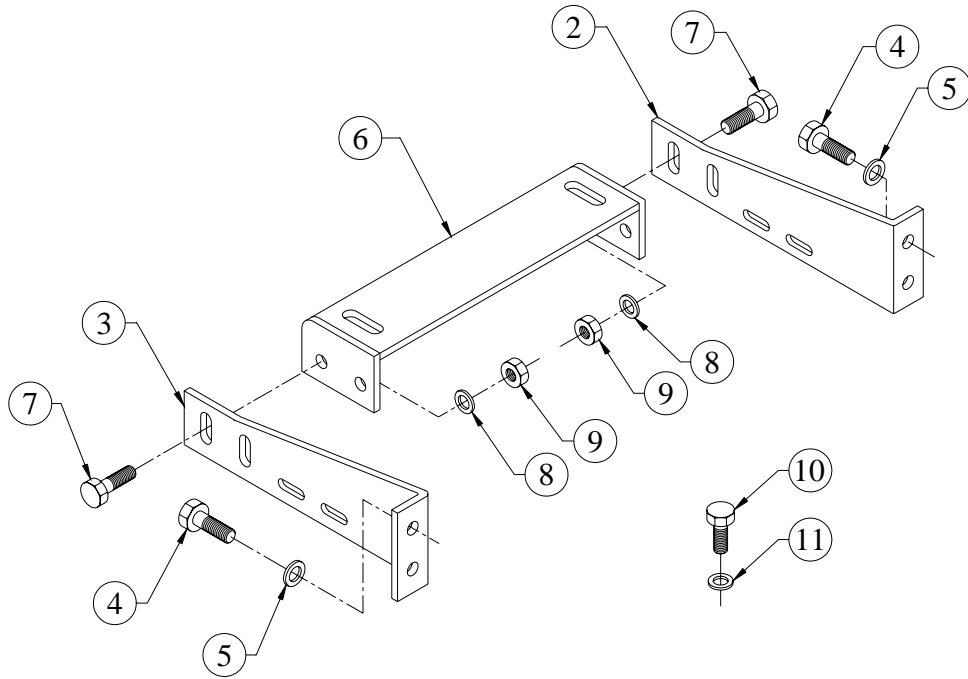
GROUP: - 2H.001...EXP



SR.NO.	PART NO.	DESCRIPTION	QTY.	REMARKS
27	03.001.19.0.00	THRUST WASHER -DRIVE END, TOP	1	
28	03.001.21.0.00	THRUST WASHER (DRIVE END, BOTTOM)	1	
*29	B2.005.22.0.00	THRUST RING PAIR-G.E.	1	CONSISTING OF SR.NO. 30 & 31.
30	B2.005.18.0.00	THRUST RING HALF (G.E.-TOP)	1	
31	B2.005.19.0.00	THRUST RING HALF (G.E.-BOTTOM)	1	
32	50.602.14.000.	PLUG (M14X1.5)	1	
33	50.508.11.000.	COPPER WASHER (14X18)	1	
34	50.401.08.014.	DOWEL	2	
35	50.540.09.016.	SPRING DOWEL PIN	2	
*36	M-093400003	MAIN BEARING SET	1	(3 PAIRS) STD.
*37	M-093400013	MAIN BEARING SET	1	0.25 mm U/S
*38	M-093400023	MAIN BEARING SET	1	0.50 mm U/S
*39	M-093400033	MAIN BEARING SET	1	0.75 mm U/S
*40	M-093400043	MAIN BEARING SET	1	1.00 mm U/S
*41	M-093400053	MAIN BEARING SET	1	1.25 mm U/S

TITLE :- MTG.FOR RADIATOR (STAGE 1)

GROUP :- 4H.081.1



SR.NO.	PART NO.	DESCRIPTION	QTY.	REMARKS
*1	4H.081.10.0.00	RADIATOR SUPPORT ASSLY	1	CONSISTING OF SR. NO. - 2 TO 11
2	4H.081.01.0.00	RADIATOR SUPPORT STARTER SIDE	1	
3	4H.081.02.0.00	RADIATOR SUPPORT FUEL PUMP SIDE	1	
4	50.003.10.020	SET SCREW - M10X1.5X20 - 8.8	4	
5	65.061.15.0.00	HARD WASHER	4	
6	4H.081.03.0.00	CROSS MEMBER FOR RADIATOR SUPPORT	1	
7	50.003.10.030	SET SCREW - M10X1.5X30 - 8.8	4	
8	50.548.10.000	SPECIAL WASHER	4	
9	50.006.10.000	NUT - M10X1.5 - GR.8	4	
10	50.003.10.020.	SET SCREW - M10X1.5X20 - 8.8	2	
11	65.061.15.0.00	HARD WASHER	2	

TITLE:- INJECTOR ASSLY**GROUP:- 2H.023**Nozzle Holder
KBAL...

SR.NO.	KOEL PART NO.	DESCRIPTION	QTY.	MICO PART NO.
4	2H.023.24.0.00	Adjusting washer 0.80 mm thick	as reqd.	2 430 100 525
4	2H.023.25.0.00	Adjusting washer 0.84 mm thick	as reqd.	2 430 100 527
4	2H.023.26.0.00	Adjusting washer 0.88 mm thick	as reqd.	2 430 100 529
4	2H.023.27.0.00	Shims 0.92 mm thick	as reqd.	2 430 100 531
4	2H.023.28.0.00	Adjusting washer 0.96 mm thick	as reqd.	2 430 100 533
4	2H.023.29.0.00	Shims 1.00 mm thick	as reqd.	2 430 100 535
4	2H.023.30.0.00	Adjusting washer 1.04 mm thick	as reqd.	2 430 100 537
4	2H.023.31.0.00	Shims 1.08 mm thick	as reqd.	2 430 100 539
4	2H.023.32.0.00	Adjusting washer 1.12 mm thick	as reqd.	2 430 100 541

TITLE:- INJECTOR ASSLY

GROUP:- 2H.023

Nozzle Holder
KBAL...



SR.NO.	KOEL PART NO.	DESCRIPTION	QTY.	MICO PART NO.
4	2H.023.33.0.00	Shims 1.16 mm thick	as reqd.	2 430 100 543
4	2H.023.34.0.00	Adjusting washer 1.20 mm thick	as reqd.	2 430 100 545
4	2H.023.35.0.00	Shims 1.24 mm thick	as reqd.	2 430 100 547
4	2H.023.36.0.00	Adjusting washer 1.28 mm thick	as reqd.	2 430 100 549
4	2H.023.37.0.00	Shims 1.32 mm thick	as reqd.	2 430 100 551
4	2H.023.38.0.00	Adjusting washer 1.36 mm thick	as reqd.	2 430 100 553
4	2H.023.39.0.00	Shims 1.40 mm thick	as reqd.	2 430 100 555
4	2H.023.40.0.00	Adjusting washer 1.44 mm thick	as reqd.	2 430 100 557
4	2H.023.41.0.00	Shims 1.48 mm thick	as reqd.	2 430 100 559

TITLE:- INJECTOR ASSLY**GROUP:- 2H.023**Nozzle Holder
KBAL...

SR.NO.	KOEL PART NO.	DESCRIPTION	QTY.	MICO PART NO.
4	2H.023.42.0.00	Adjusting washer 1.52 mm thick	as reqd.	2 430 100 561
4	2H.023.43.0.00	Shims 1.56 mm thick	as reqd.	2 430 100 563
4	2H.023.44.0.00	Adjusting washer 1.60 mm thick	as reqd.	2 430 100 565
4	2H.023.45.0.00	Shims 1.64 mm thick	as reqd.	2 430 100 567
4	2H.023.46.0.00	Adjusting washer 1.68 mm thick	as reqd.	2 430 100 569
4	2H.023.47.0.00	Shims 1.72 mm thick	as reqd.	2 430 100 571
4	2H.023.48.0.00	Adjusting washer 1.76 mm thick	as reqd.	2 430 100 573
4	2H.023.49.0.00	Shims 1.80 mm thick	as reqd.	2 430 100 575
4	2H.023.50.0.00	Adjusting washer 1.84 mm thick	as reqd.	2 430 100 577

TITLE:- INJECTOR ASSLY

GROUP:- 2H.023

Nozzle Holder
KBAL...



SR.NO.	KOEL PART NO.	DESCRIPTION	QTY.	MICO PART NO.
4	2H.023.51.0.00	Shims 1.88 mm thick	as reqd.	2 430 100 579
4	2H.023.52.0.00	Adjusting washer 1.92 mm thick	as reqd.	2 430 100 581
4	2H.023.53.0.00	Shims 1.96 mm thick	as reqd.	2 430 100 583
8	2H.023.54.0.00	Distance piece	1	2 430 136 015
2	2H.023.55.0.00	Pressure bolt	1	2 433 124 035
7	2H.023.56.0.00	Nozzle cap nut	1	2 433 314 120
3	2H.023.57.0.00	Spring	1	2 434 619 064
12*	10.029.07.0.00	Nozzle sealing washer	1	2 439 999 032
4	2H.023.62.0.00	Shim	as reqd.	9 431 030 149
4	2H.023.63.0.00	Shim	as reqd.	9 431 030 150
4	2H.023.64.0.00	Shim	as reqd.	9 431 030 151

TITLE:- INJECTOR ASSLY

GROUP:- 2H.023

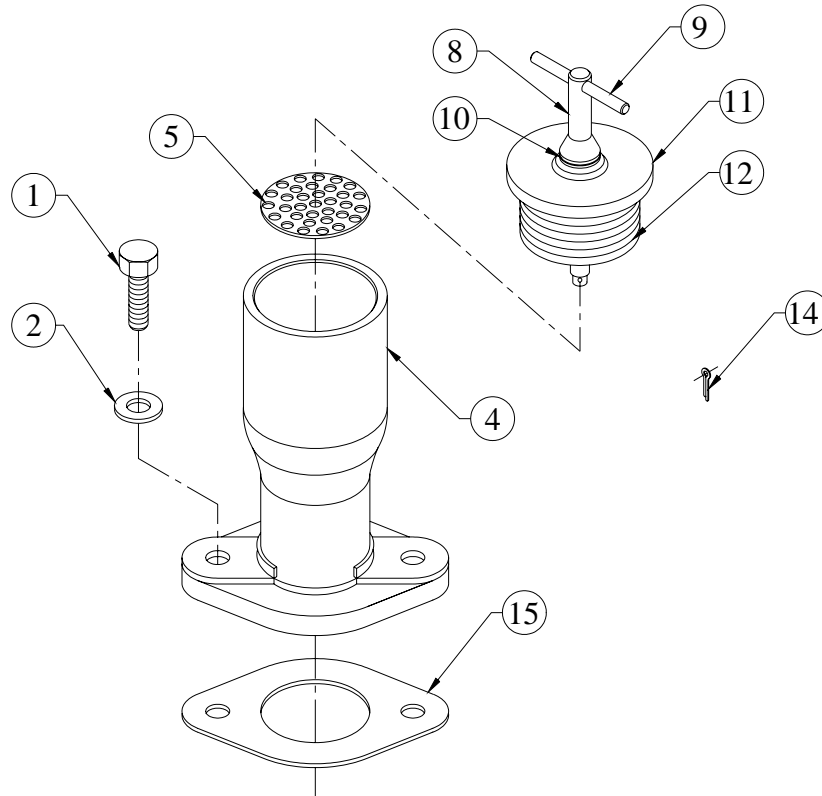
Nozzle Holder
KBAL...



SR.NO.	KOEL PART NO.	DESCRIPTION	QTY.	MICO PART NO.
4	2H.023.65.0.00	Shim	as reqd.	9 431 030 152
4	2H.023.66.0.00	Shim	as reqd.	9 431 030 153
4	2H.023.67.0.00	Shim	as reqd.	9 431 030 154
4	2H.023.68.0.00	Shim	1	9 431 030 155
4	2H.023.69.0.00	Shim	as reqd.	9 431 030 156
4	2H.023.70.0.00	Shim	as reqd.	9 431 030 157
11*	2H.023.21.0.00	Nozzle	1	F 002 C30 003

TITLE:- OIL FILLING BODY

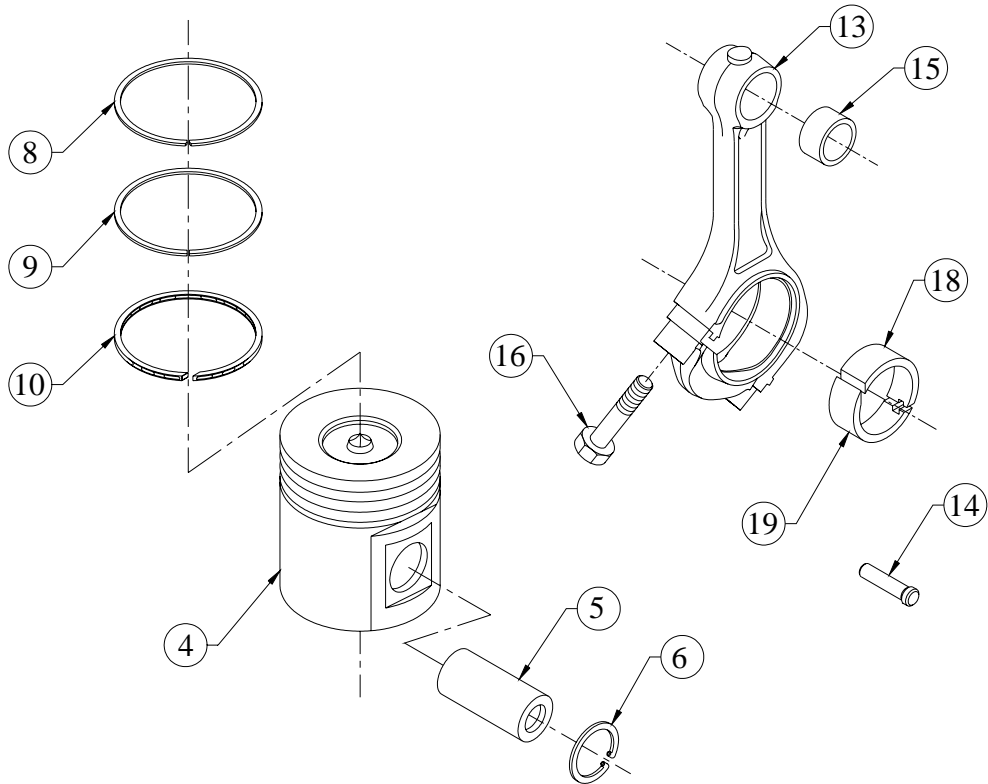
GROUP:- 4H.027...EXP



SR.NO.	PART NO.	DESCRIPTION	QTY.	REMARKS
1	50.003.08.025	SET SCREW - M8X1.25X25 - 8.8	2	
2	50.506.08.000.	PLAIN MACHINED WASHER - M8	2	
*3	4H.027.20.0.00	ASSEMBLY OF OIL FILLING BODY WITH JOINT	1	CONSISTING OF SR. NO.- 4 TO 6, 15
4	4H.027.01.0.00	OIL FILLING BODY	1	
5	34.036.50.0.00	PERFORATED DISC.	1	
*6	34.036.60.0.00	CAP ASSLY	1	CONSISTING OF SR. NO.- 7, 10 TO 14
*7	03.592.10.0.00	SUB-ASSLY.OF CLAMPING SCREW	1	CONSISTING OF SR. NO.- 8 & 9
8	03.592.01.0.00	CLAMPING SCREW FOR CAP	1	
9	34.036.16.0.00	PIN	1	
10	34.036.17.0.00	WASHER	1	
11	34.036.14.0.00	CAP	1	
12	03.592.02.0.00	RUBBER BUSH FOR CAP	1	

TITLE :- PISTON & CONNECTING ROD ASSLY.

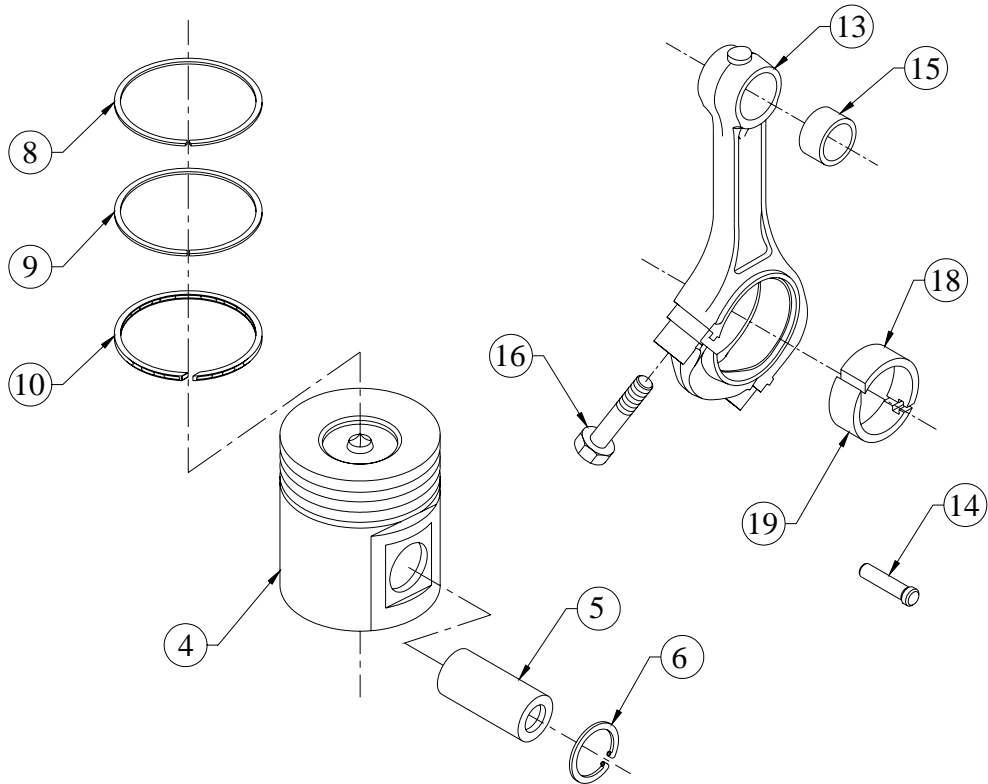
GROUP :- 2H.009



SR.NO.	PART NO.	DESCRIPTION	QTY.	REMARKS
*1	2H.009.40.0.00	PISTON & CON.ROD ASSEMBLY	1	CONSISTING OF SR. NO. 2, 11, 17
*2	2H.009.10.0.00	PISTON ASSEMBLY -COMPLETE	1	CONSISTING OF SR. NO. 3 & 7
*3	2H.009.20.0.00	PISTON WITH PIN AND CIRCLIP.	1	CONSISTING OF SR. NO. 4 TO 6
4	2H.009.01.0.00	PISTON 105 MM DIA (3 RING)A-GROUP	1	
5	34.025.24.0.00	PISTON PIN	1	
6	50.502.35.000.	CIRCLIP (INTERNAL)-35 MM	2	
*7	2H.009.30.0.00	PISTON RING SET (105 DIA.)	1	CONSISTING OF SR. NO. 8 TO 10
8	2H.009.02.0.00	TOP RING (105 DIA)	1	
9	2H.009.03.0.00	COMPRESSION RING (105 DIA)	1	
10	2H.009.04.0.00	OIL CONTROL RING (105 DIA)	1	
*11	02.021.30.0.00	CON.ROD ASSLY.(WITH L.E.BRG.)	1	CONSISTING OF SR. NO. 12

TITLE :- PISTON & CONNECTING ROD ASSLY.

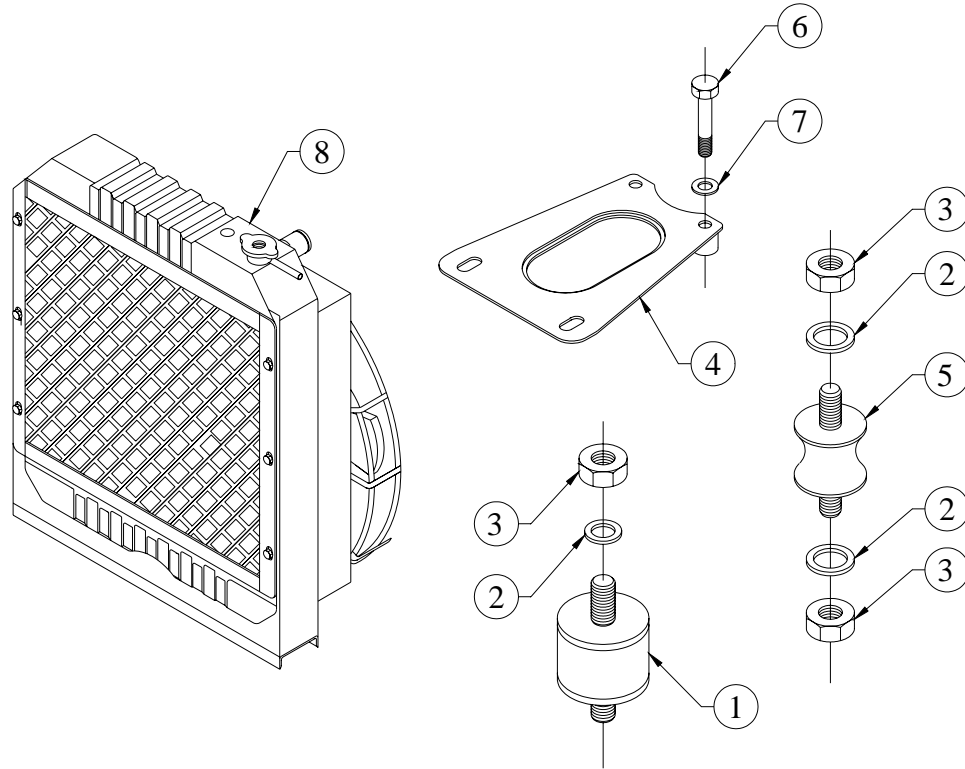
GROUP :- 2H.009



SR.NO.	PART NO.	DESCRIPTION	QTY.	REMARKS
*12	02.021.20.0.00	CON ROD ASSEMBLY (WITHOUT LE BRG.)	1	CONSISTING OF SR. NO. 13 TO 16
13	02.021.01.0.00	CON.ROD (W/O MASS BALANCING)	1	
14	02.021.02.0.00	LOCATING PIN	1	
15	02.021.03.9.00	SMALL END BUSH (S/F)	1	
16	02.021.04.0.00	CON.ROD BOLT	2	
*17	02.021.71.0.00	ASSY.OF L.E BRG.(TOP & BOTTOM)STD (BEARING PART NO. *B – 093400003)	1	CONSISTING OF SR. NO. 18 & 19
18	02.021.05.0.00	LARGE END BEARING (TOP) STD.	1	
19	02.021.06.0.00	LARGE END BEARING (BOTTOM) STD.	1	
*20	B-093400003	L. E. BEARING SET	1	(2 PAIRS) STD.
*21	B-093400013	L.E. BEARING SET	1	0.25 mm U/S
*22	B-093400023	L.E. BEARING SET	1	0.50 mm U/S
*23	B-093400033	L.E. BEARING SET	1	0.75 mm U/S
*24	B-093400043	L.E. BEARING SET	1	1.00 mm U/S
*25	B-093400053	L.E. BEARING SET	1	1.25 mm U/S
*26	B-093400063	L.E. BEARING SET	1	1.50 mm U/S

**TITLE :- 3R1040 RADIATOR FOR OPEN GENSET
(EXPORT & P.U. PAINTED)**

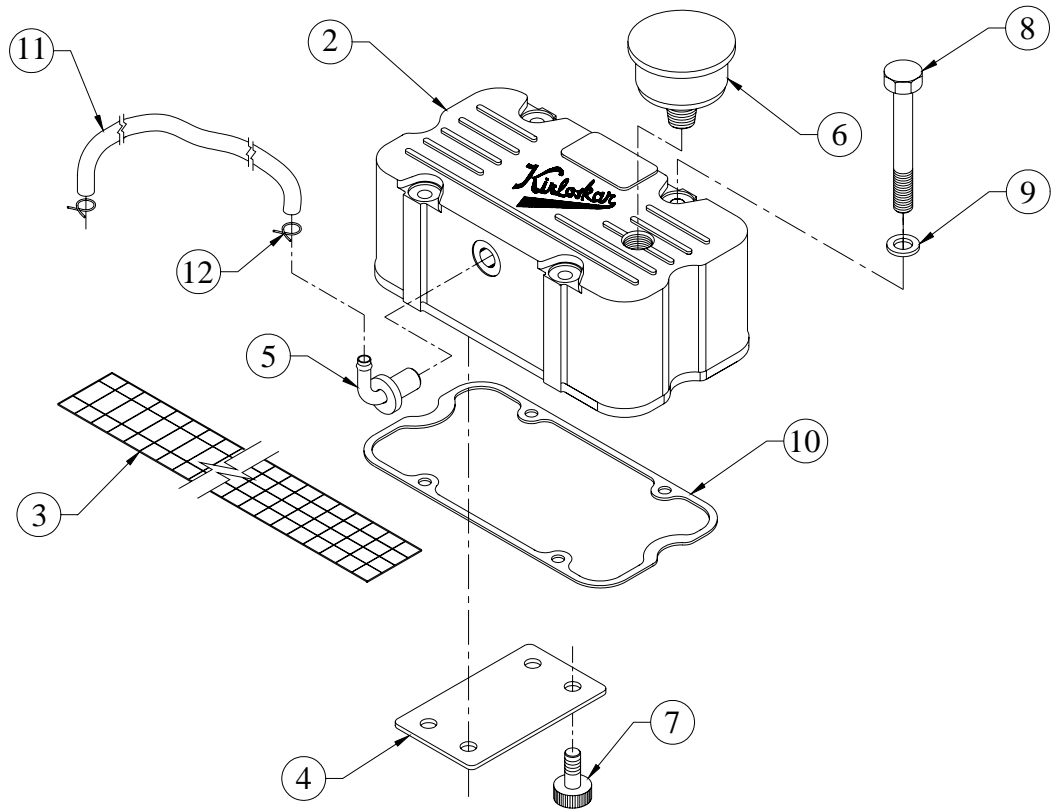
GROUP :- 3H.216



SR.NO.	PART NO.	DESCRIPTION	QTY.	REMARKS
1	48.213.08.0.00	ANTIVIBRATION MTG.- BOTTOM,RADIATOR.	2	
2	50.548.08.000.	SPL.PLAIN M/CED WASHER	6	
3	50.006.08.000.	NUT- M8X1.25 - GR.8	6	
4	3H.030.01.0.00	STAY FOR RADIATOR	1	
5	44.035.05.0.00	ANTIVIBRATION MOUNTING	2	
6	50.002.08.050.	SET BOLT - M8X1.25X50 - 8.8	2	
7	50.506.08.000.	PLAIN MACHINED WASHER - M8	2	
8	3H.216.20.0.PR	3R1040 RADIATOR FOR EXPORT (P.U. PAINTED)	1	

TITLE:- ROCKER COVER (FOR PCV)

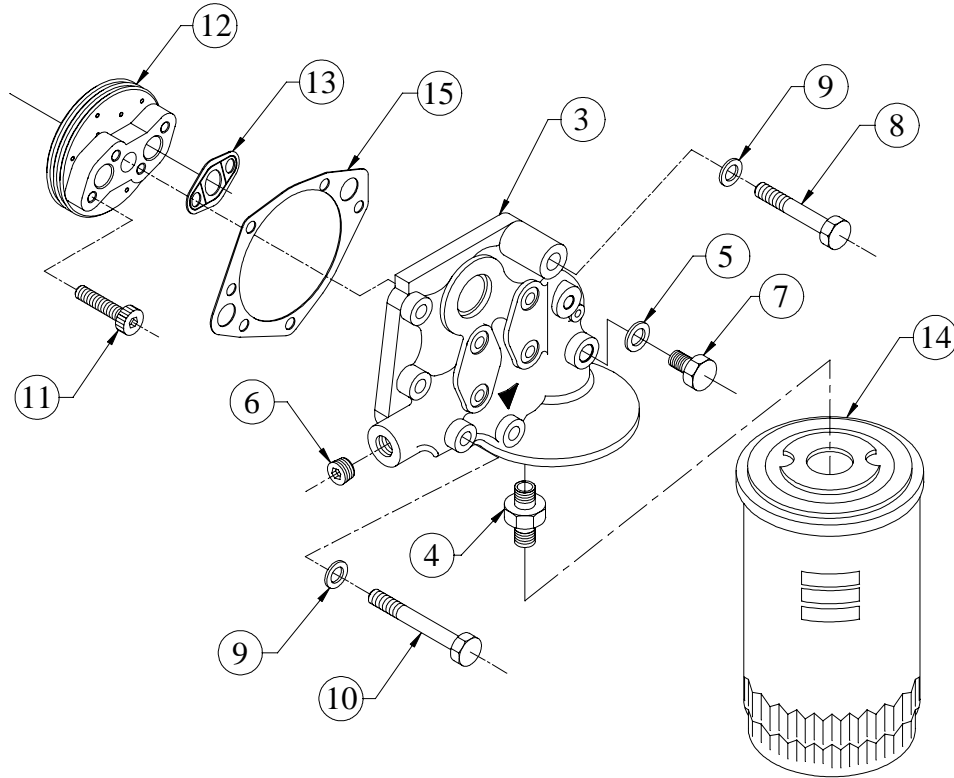
GROUP:- 2H.204



SR.NO.	PART NO.	DESCRIPTION	QTY.	REMARKS
*1	2H.204.20.0.00	SUB ASM OF ROCKER COVER & BREATHER INLET ASM	1	CONSIST. OF SR. NO. 2 TO 7
2	2H.204.01.0.00	ROCKER COVER (MACHINING)	1	
3	2H.204.02.0.00	WIRE MESH	1	
4	4H.139.02.0.00	DEFLECTOR PLATE	1	
5	2H.203.10.0.00	ASSEMBLY FOR BREATHER INLET	1	
6	4H.139.05.0.00	AIR CLEANER FOR PCV	1	
7	2H.204.04.0.PR	ALLEN BOLT FOR ROCKER COVER PLATE (PCV)	4	
8	50.002.08.110.	SET BOLT - M8X1.25X110 - 8.8	4	
9	50.506.08.000.	PLAIN MACHINED WASHER - M8	4	
10	P1.044.02.0.00	JOINT FOR ROCKER COVER	1	
11	3H.313.02.0.00	FLEXIBLE PIPE	1	
12	2H.204.03.0.00	CLIP (SUITABLE FOR 12 DIA PIPE)	2	

**TITLE :- SPIN ON FILTER & COOLER
(4RT HEADER + 3R COOLER)
S/F WATER JACKET HEATER**

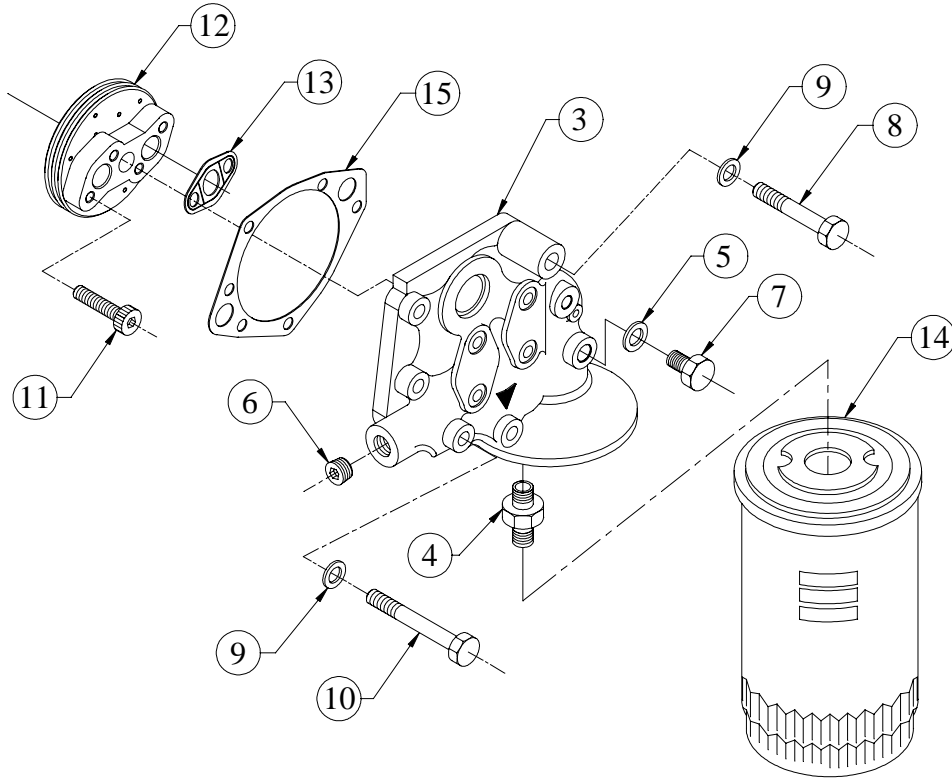
GROUP :- 2H.109



SR.NO.	PART NO.	DESCRIPTION	QTY.	REMARKS
*1	2H.109.10.0.00	L.O. HEADER ASSEMBLY	1	CONSISTING. OF SR NO. 2, 8 TO 13
*2	4H.658.20.0.00	HEADER SUB ASSEMBLY (L.O. FILTER)	1	CONSISTING. OF SR. NO.- 3 TO 7
3	4H.658.01.0.00	HEADER FOR L.O.C & FILTER S/F WATER JACKET HEATER	1	
4	3H.007.05.0.00	ADAPTOR FOR SPIN ON FILTER	1	
5	34.001.09.0.00	PLUG FOR OIL GALLERY	1	
6	50.056.06.000	HEADLESS PIPE PLUG 1/2"-14 NPTF	2	
7	50.565.10.000	INTERNAL RUBBER LIP SEALING WASHER -M10- FOR FUEL LINES	1	
8	50.002.08.070	SET BOLT - M8X1.25X70 - 8.8	1	
9	50.506.08.000	PLAIN MACHINED WASHER - M8	6	
10	50.002.08.090	SET BOLT - M8X1.25X90 - 8.8	5	

TITLE :- SPIN ON FILTER & COOLER
(4RT HEADER + 3R COOLER)
S/F WATER JACKET HEATER

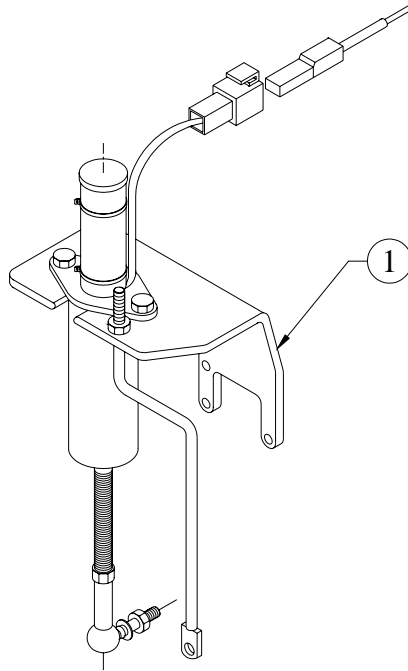
GROUP :- 2H.109



SR.NO.	PART NO.	DESCRIPTION	QTY.	REMARKS
11	50.011.08.035	SOCKET HEAD SCREW - M8X1.25X35 - 8.8	4	
12	3H.007.11.0.00	LUB OIL COOLER (3 PLATE)	1	
13	3H.007.13.0.00	JOINT FOR LUB OIL COOLER (NON ASBESTOS GASKET)	1	
14	04.270.01.0.00	SPIN ON FILTER FOR LUBRICATING OIL	1	
15	3H.007.15.0.00	JOINT FOR HEADER	1	

**TITLE:- STOP SOLENOID ASSEMBLY 12 VDC
FOR MICO PUMP ENRGIES
TO RUN WITHOUT TIMER**

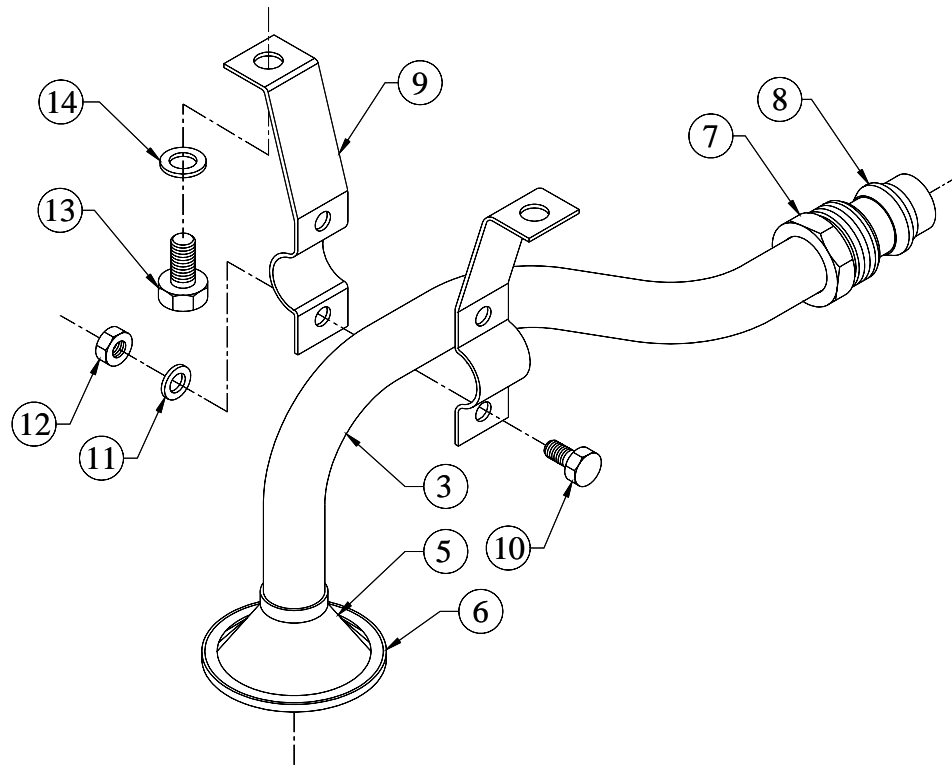
GROUP:- 3H.135.1



SR.NO.	PART NO.	DESCRIPTION	QTY.	REMARKS
1	3H.135.20.0.00	STOP SOLENOID ASSEMBLY 12V D.C. FOR MICO PUMP ENRGIES TO RUN WITHOUT TIMER	1	

TITLE :- SUCTION TUBE

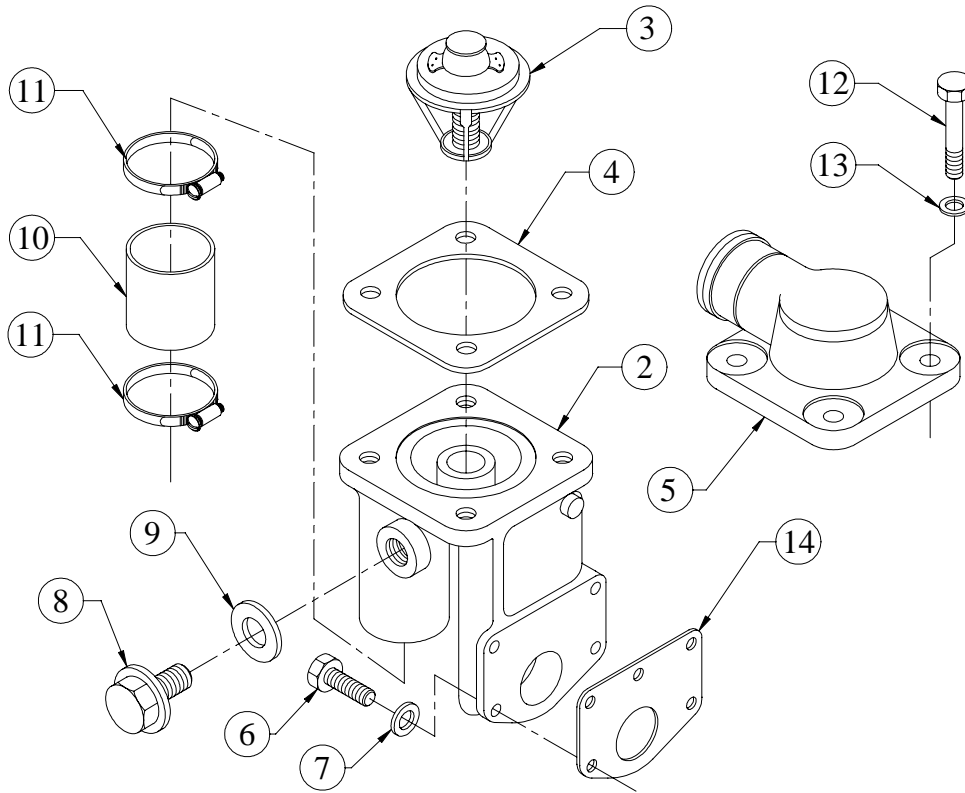
GROUP :- 2H.071



SR.NO.	PART NO.	DESCRIPTION	QTY.	REMARKS
*1	2H.071.40.0.00	ASSEMBLY OF SUCTION TUBE (FOR SHEET METAL SUMP)	1	CONSISTING OF SR. NO. 2
*2	2H.071.30.0.00	SUB ASSEMBLY OF SUCTION TUBE	1	CONSISTING OF SR. NO. 3, 4
3	2H.071.02.0.00	PIPE FOR SUCTION TUBE (20 O.D.)	1	
*4	03.011.10.0.00	FUNNEL & WIRE GAUGE ASSEMBLY FOR STRAINER	1	CONSISTING OF SR. NO. 5, 6
5	03.011.05.0.00	STRAINER FUNNEL	1	
6	03.011.06.0.00	STRAINER WIRE GAUZE	1	
7	03.011.02.0.00	UNION NUT	1	
8	03.011.03.0.00	DOUBLE CONE RING	1	
9	03.011.04.0.00	CLIP FOR PIPE	1	
10	50.003.06.012.	SET SCREW - M6X1X12 - 8.8	2	
11	50.506.06.000.	PLAIN MACHINED WASHER - M6	2	
12	50.006.06.000.	NUT - M6X1 - GR.8	2	
13	50.003.08.016.	SET SCREW - M8X1.25X16 - 8.8	2	
14	50.506.08.000.	PLAIN MACHINED WASHER - M8	2	

**TITLE :- THERMOSTAT AND MOUNTING
(NON ASBESTOS GASKET - USA)**

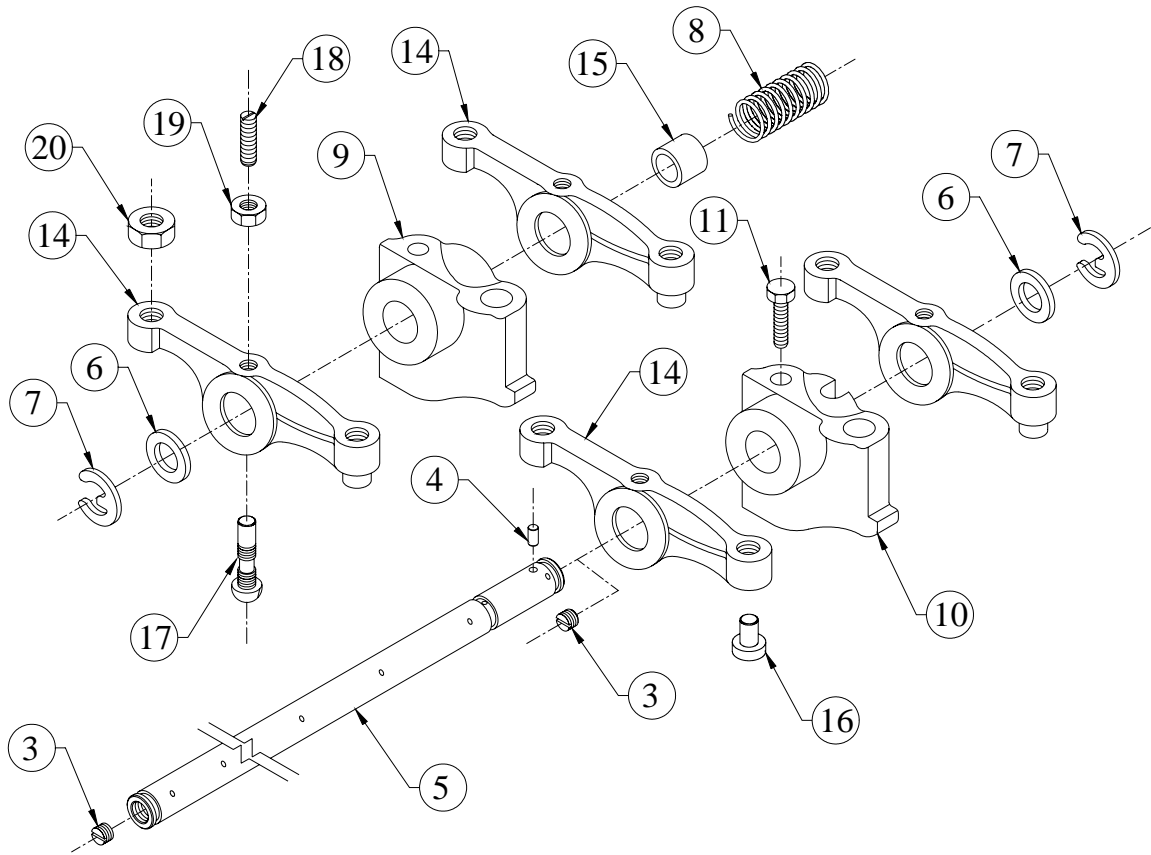
GROUP :- 3H.061...EXP



SR.NO.	PART NO.	DESCRIPTION	QTY.	REMARKS
*1	3H.061.30.0.00	THERMOSTAT ASSEMBLY	1	CONSISTING OF SR. NO.- 2 TO 11
2	4H.053.01.0.00	THERMOSTAT HOUSING	1	
3	39.040.09.0.00	THERMOSTAT ELEMENT (74 DEG) - WTIL NO.DEV358	1	
4	4H.053.12.0.00	JOINT FOR THERMOSTAT COVER	1	
5	47.025.03.0.00	THERMOSTAT COVER- HORIZONTAL OUTLET	1	
6	50.003.08.025.	SET SCREW - M8X1.25X25 - 8.8	4	
7	50.506.08.000.	PLAIN MACHINED WASHER - M8	4	
8	50.602.14.000.	PLUG (M14X1.5)	1	
9	50.508.11.000.	COPPER WASHER (14X18)	1	
10	4H.023.02.0.00	BYPASS HOSE	1	
11	50.519.08.000.	WORM DRIVE HOSE CLIP (41 MM)	2	
12	50.002.08.050.	SET BOLT - M8X1.25X50 - 8.8	4	
13	50.506.08.000.	PLAIN MACHINED WASHER - M8	4	
14	4H.053.11.0.00	JOINT FOR THERMOSTAT HOUSING	1	

TITLE :- VALVE ROCKER ASSEMBLY

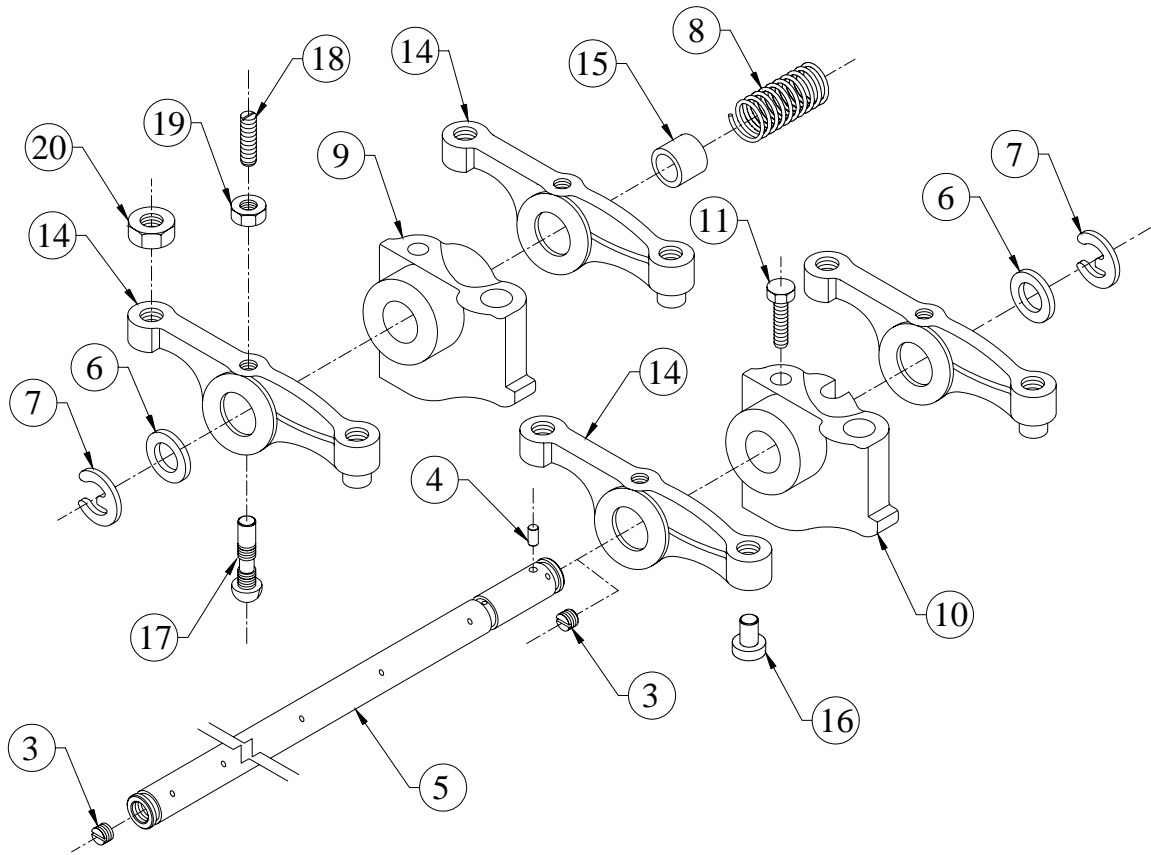
GROUP :- 2H.022



SR.NO.	PART NO.	DESCRIPTION	QTY.	REMARKS
*1	P3.010.10.0.00	VALVE ROCKER ASSLY.	1	CONSISTING OF SR. NO.- 2 6 TO 12, 21
*2	2H.022.20.0.00	ROCKER SHAFT ASSEMBLY	1	CONSISTING OF SR. NO.- 3 TO 5
3	50.022.12.010	SOCKET HEAD GRUB SCREW - M12X10	2	
4	4H.008.04.0.00	GROOVED SOCKET PIN	1	
5	P3.010.01.0.00	ROCKER SHAFT	1	
6	2H.022.04.0.00	WASHER(FOR ROCKER ARM)	2	
7	50.513.15.000.	E TYPE CIRCLIP- EXTERNAL(15 DIA.)	2	
8	2H.022.03.0.00	SPRING FOR ROCKER SHAFT.	1	
9	2H.022.01.0.00	ROCKER SUPPORT(FINISH) (FWE)	1	
10	2H.022.02.0.00	ROCKER SUPPORT(FINISH)	1	
11	50.003.08.030	SET SCREW - M8X1.25X30 - 8.8	2	

TITLE :- VALVE ROCKER ASSEMBLY

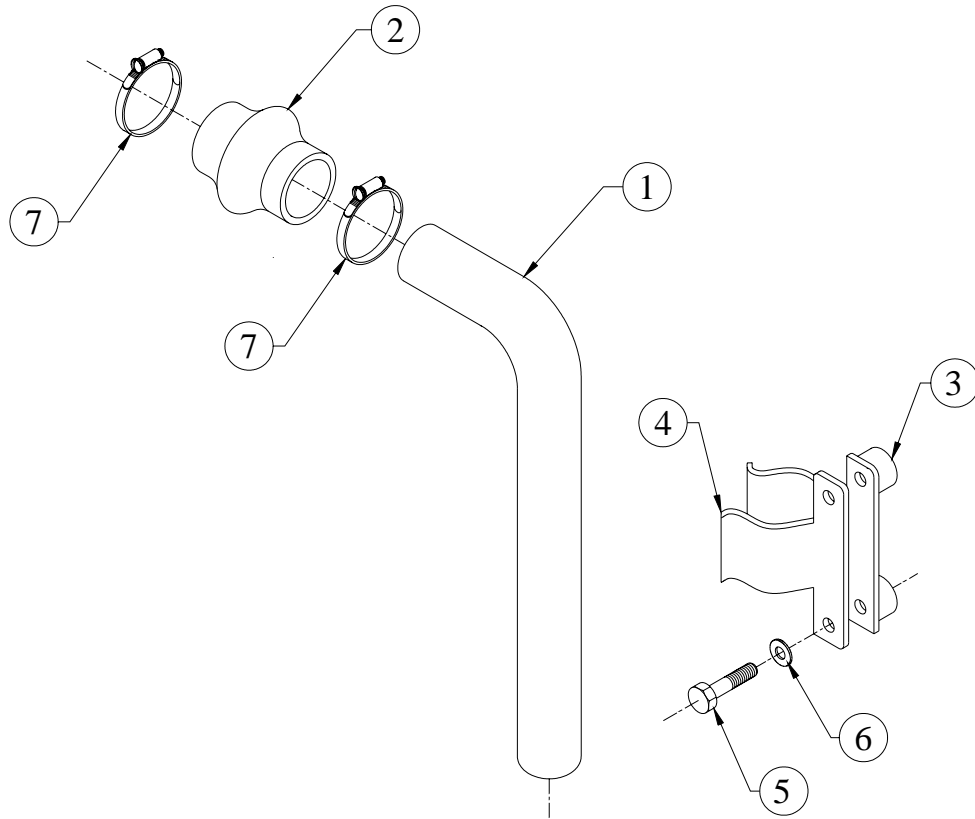
GROUP :- 2H.022



SR.NO.	PART NO.	DESCRIPTION	QTY.	REMARKS
*12	02.024.20.0.00	VALVE ROCKER ASSLY	4	CONSISTING OF SR. NO.- 13 16 TO 20
*13	02.024.23.0.00	ROCKER ARM SUB ASSEMBLY (WITH VR BUSH)	1	CONSISTING OF SR. NO.- 14 & 15
14	02.024.11.0.00	ROCKER ARM	1	
15	02.024.12.0.00	V.R. BUSH	1	
16	02.024.15.0.00	V.R.TOE	1	
17	02.024.13.0.00	ROCKER-ARM ADJ. SCREW	1	
18	02.024.14.0.00	OIL METERING SCREW	1	
19	50.006.06.000	NUT - M6X1 - GR.8	1	
20	60.007.03.0.00	NUT	1	
21	P2.010.03.0.00	WASHER FOR ROCKER ARM	4	

**TITLE :- WATER INLET AND OUTLET
CONN. FOR RADIATOR(STAGE 1)**

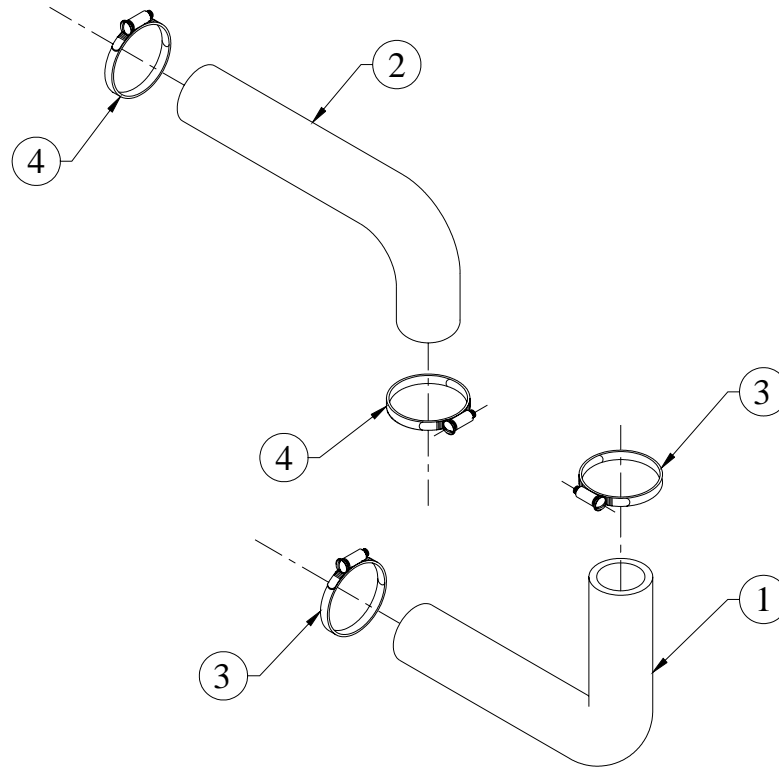
GROUP :- 3H.029.1



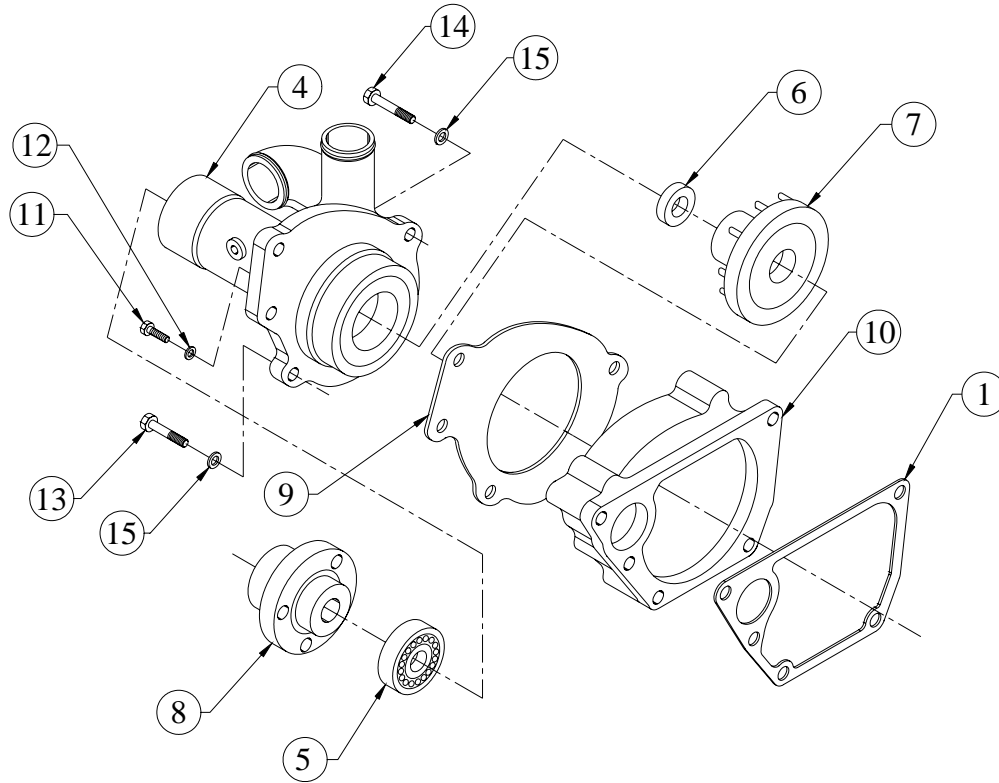
SR.NO.	PART NO.	DESCRIPTION	QTY.	REMARKS
1	3H.029.02.0.00	PIPE (RADIATOR TO PUMP INLET)	1	
2	4H.073.02.0.00	HOSE WATER PUMP TO RADIATOR(45X45X80L)	1	
3	3H.029.03.0.00	LOWER CLAMP(FOR RADIATOR PIPE)	1	
4	3H.029.04.0.00	TOP CLAMP(FOR RADIATOR PIPE)	1	
5	50.002.08.075.	SET BOLT - M8X1.25X75 - 8.8	2	
6	50.506.08.000.	PLAIN MACHINED WASHER - M8	2	
7	50.519.11.000.	WORM DRIVE HOSE CLIP (61 MM)	2	

**TITLE :- WATER INLET AND OUTLET
CONN.FOR RADIATOR(STAGE 2)**

GROUP :- 3H.029.2



SR.NO.	PART NO.	DESCRIPTION	QTY.	REMARKS
1	4H.158.04.0.00	HOSE (WATER PUMP INLET PIPE TO RADIATOR OUTLET)	1	
2	3H.029.05.0.00	HOSE(THERMOSTAT TO RADIATOR)(RT 200X65X38ID)	1	
3	48.305.06.0.00	JUPITER WORM DRIVE CLAMP,TYPE 603,65mm DIA(S/F 65mm HOSE O.D.)	2	
4	38.228.01.0.00	JUPITOR HOSE CLAMP (JW7B13 - 60 DIA.)	2	

TITLE: -WATER PUMP**GROUP: -4H.052...EXP**

SR.NO.	PART NO.	DESCRIPTION	QTY.	REMARKS
1	4H.052.12.0.00	JOINT FOR DELIVERY VOLUTE	1	
*2	4H.052.95.0.00	WATER PUMP ASSEMBLY (HIGHER BEARING SIZE)	1	CONSISTING OF SR. NO.- 3, 10 TO 12
*3	4H.052.70.0.00	SUB ASSEMBLY OF DILEVERY VOLUTE	1	CONSISTING OF SR. NO.- 4 TO 9
4	4H.052.05.0.00	BEARING HOUSING (FOR 42 DIA SPINDLE BEARING)	1	
5	4H.052.06.0.00	SPINDLE BEARING (42 DIA)	1	
6	4H.052.07.0.00	UNITISED SEAL (KACO)	1	
7	4H.021.04.0.00	IMPELLER (95 DIA)	1	
8	4H.021.07.0.00	HUB FOR PUMP PULLEY	1	
9	4H.052.11.0.00	JOINT FOR BEARING HOUSING (282.5 CRS)	1	
10	4H.052.02.0.00	DELIVERY VOLUTE (282.5 CRS)	1	
11	50.003.08.025	SET SCREW - M8X1.25X25 - 8.8	3	
12	10.020.03.0.00	HARD WASHER (F)	3	
13	50.002.10.060	SET BOLT - M10X1.5X60 - 8.8	3	

**TITLE: - SET OF JOINTS, WASHERS,
'O' RINGS & HOSES (2H.2034)**

GROUP: -

SR.NO.	PART NO.	DESCRIPTION	QTY.	REMARKS
*1	2H.074.04.0.00	SET OF JOINTS	1	CONSISTING OF SR. NO. 2 TO 22
*2	2H.005.11.0.00	JOINT FOR GEAR COVER	1	
*3	2H.006.11.0.00	JOINT FOR OIL SEAL HOUSING	1	
*4	2H.013.11.0.00	JOINT FOR DELIVERY BODY	1	
*5	2H.017.11.0.00	JOINT FOR COVER FOR FUEL PUMP GEAR	1	
*6	2H.032.11.0.00	JOINT FOR AIR INLET MANIFOLD	1	
*7	2H.037.11.0.00	JOINT FOR FRONT COVER	1	
*8	2H.072.02.0.PR	JOINT FOR LUB OIL SUMP (NON ASBESTOS)	1	
*9	34.016.12.0.00	JOINT FOR FUEL PUMP (NON ASBESTOS)	1	
*10	34.107.06.0.00	JOINT FOR ADAPTOR ON EX.MANIFOLD	2	
*11	3H.007.13.0.00	JOINT FOR LUB OIL COOLER (NON ASBESTOS GASKET)	1	
*12	3H.007.15.0.00	JOINT FOR HEADER	1	

**TITLE: - SET OF JOINTS, WASHERS,
'O' RINGS & HOSES (2H.2034)**

GROUP: -

SR.NO.	PART NO.	DESCRIPTION	QTY.	REMARKS
*13	4H.001.14.0.00	JOINT FOR CAM BORE BLANKING PLATE	1	
*14	4H.007.15.0.00	JOINT FOR THREADED FLANGE	1	
*15	4H.027.11.0.00	JOINT FOR OIL FILLING BODY	1	
*16	4H.052.11.0.00	JOINT FOR BEARING HOUSING (282.5 CRS)	1	
*17	4H.052.12.0.00	JOINT FOR DELIVERY VOLUTE	1	
*18	4H.053.11.0.00	JOINT FOR THERMOSTAT HOUSING	1	
*19	4H.053.12.0.00	JOINT FOR THERMOSTAT COVER	1	
*20	P1.007.09.0.00	CYL HEAD GASKET FOR 2 CYL ENGINE (THICKNESS 1.22)	1	
*21	P1.044.02.0.00	JOINT FOR ROCKER COVER	1	
*22	P5.036.02.0.00	JONT FOR EXHAUST MANIFOLD (NON ASBESTOS)	2	
*23	2H.074.33.0.00	SET OF WASHERS	1	CONSISTING OF SR. NO. 24 TO 33
*24	50.508.07.000.	COPPER WASHER (10X14)	4	

**TITLE: - SET OF JOINTS, WASHERS,
'O' RINGS & HOSES (2H.2034)**

GROUP: -

SR.NO.	PART NO.	DESCRIPTION	QTY.	REMARKS
*25	50.508.08.000.	COPPER WASHER (10X16)	1	
*26	50.508.09.000.	COPPER WASHER (12X16)	3	
*27	50.508.11.000.	COPPER WASHER (14X18)	3	
*28	50.508.15.000.	COPPER WASHER (17X23)	1	
*29	50.508.16.000.	COPPER WASHER (18X22)	1	
*30	50.508.18.000.	COPPER WASHER (20X24)	2	
*31	50.508.27.000.	COPPER WASHER (24X29)	1	
*32	50.565.10.000.	INTERNAL RUBBER LIP SEALING WASHER -M10- FOR FUEL LINES	1	
*33	50.565.14.000.	INTERNAL RUBBER LIP SEALING WASHER -M14- FOR FUEL LINES	10	
*34	2H.074.39.0.00	SET OF 'O' RINGS	1	CONSISTING OF SR. NO. 35 TO 40
*35	03.010.11.0.00	O RING - L.O.PUMP (1.57X65, 21508)	1	
*36	03.036.01.0.00	O RING - DIPSTICK (2X5, 21515 OR 21511)	1	
*37	2H.008.07.0.00	O RING (FOR CYL.LINER)	3	
*38	2H.014.02.0.00	O RING (FOR DELIVERY TUBE)	2	

**TITLE: - SET OF JOINTS, WASHERS,
'O' RINGS & HOSES (2H.2034)**

GROUP: -

SR.NO.	PART NO.	DESCRIPTION	QTY.	REMARKS
*39	3H.009.11.0.00	O RING FOR NOZZLE	1	
*40	3H.132.03.0.00	SEALING RING (FUEL FILTER)	2	
*41	2H.074.54.0.00	SET OF HOSES	1	CONSISTING OF SR. NO. 42 TO 47
*42	3H.029.05.0.00	HOSE (THERMOSTAT TO RADIATOR)(RT 200X65X38ID)	1	
*43	48.417.01.0.00	LUB OIL SUPPLY HOSE (FOR FIP)	1	
*44	4H.023.02.0.00	BYPASS HOSE	1	
*45	4H.073.02.0.00	HOSE WATER PUMP TO RADIATOR (45X45X80L)	1	
*46	4H.158.04.0.00	HOSE (WATER PUMP INLET PIPE TO RADIATOR OUTLET)	1	
*47	4H.404.02.0.00	HOSE FOR AIR CLEANER	1	